

WAAS CH 58301 W18A	APP CRS 178°	Rwy Idg 6000 TDZE 447 Apt Elev 447
--	------------------------	---

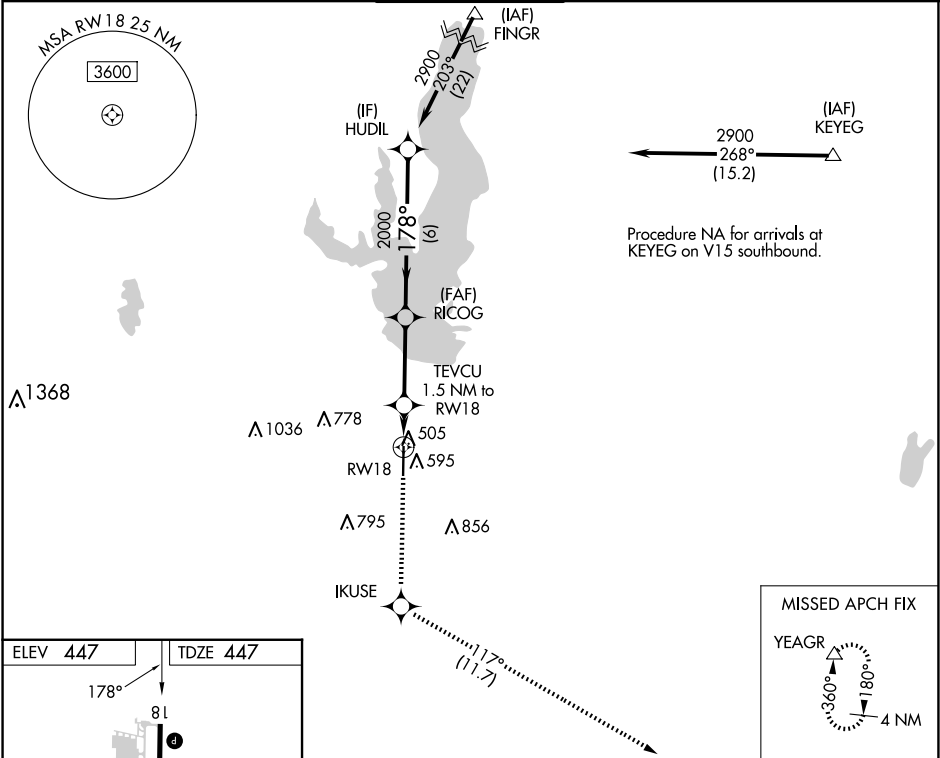
RNAV (GPS) RWY 18

MESQUITE METRO (HQZ)

DME/DME RNP-0.3 NA. When local altimeter setting not received, use Dallas Love Fld altimeter setting and increase all DA/MDA 60 feet. Increase LPV all Cats visibility to 1 mile, LNAV Cat C visibility to 1 3⁄8 and Circling Cat C visibility to 2 1⁄4. Helicopter visibility reduction below 3⁄4 SM NA.

MISSED APPROACH: Climb to 3000 direct IKUSE then on track 117° to YEAGR and hold.

AWOS-3 118.175	LONE STAR APP CON 125.2 343.65	MESQUITE TOWER★ 120.3 (CTAF) 0	GND CON 118.85	UNICOM 123.05
--------------------------	--	---	--------------------------	-------------------------



ELEV **447**

TDZE **447**

178°

81

TWR 535

6000 X

36

MIRL Rwy 18-36 **0**
REIL Rwy 18 and 36 **0**
RLS Rwy 18 and 36 **0**

3000	IKUSE	tr 117°	YEAGR	HUDIL
*RNAV only.				
RW18 1.5 NM to RICOG 2000 178° 2900 2000 980* GP 3.00° TCH 56				
1.5 NM 3.1 NM 6 NM				
CATEGORY	A		B	
LPV DA	697-3⁄4		250 (300-3⁄4)	
LNAV MDA	860-1 413 (500-1)		860-1 1⁄8 413 (500-1 1⁄8)	
CIRCLING	960-1 513 (600-1)		1160-2 713 (800-2)	

SC-2, 10 JUL 2025 to 07 AUG 2025

SC-2, 10 JUL 2025 to 07 AUG 2025