



WAAS CH 97332 W17A	APP CRS 175°	Rwy Idg 5101 TDZE 1275 Apt Elev 1275
--	------------------------	---

RNAV (GPS) RWY 17
OLNEY MUNI (ONY)

RNP APCH - GPS.		MISSED APPROACH: Climb to 1800 then climbing left turn to 5000 direct KARYN and hold.
 Rwy 17 helicopter visibility reduction below ¾ SM NA.  NA Baro-VNAV NA. Use Graham altimeter setting.		
RPH AWOS-3P 118.025	FORT WORTH CENTER 133.5 350.35	UNICOM 122.8 (CTAF) 0

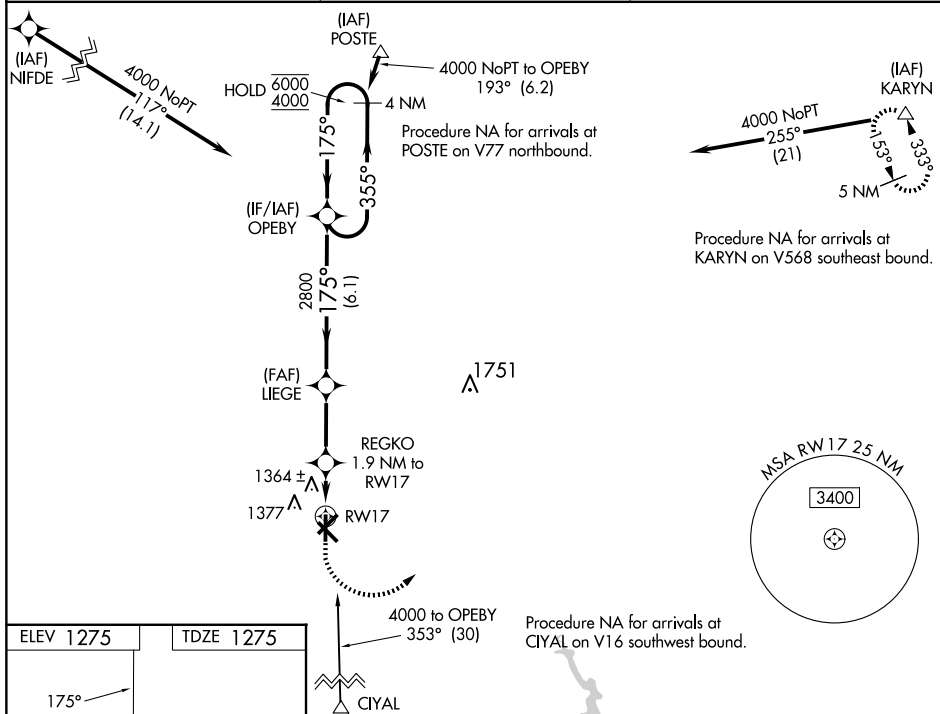


Diagram 1: A 180-degree turn holding pattern. The diagram shows a 180-degree turn with a 180-degree turn angle. The diagram includes a 180-degree turn angle of 180 degrees. The diagram includes a 180-degree turn angle of 180 degrees.

Diagram 2: A 4 NM Holding Pattern. The diagram shows a 4 NM holding pattern with a 355-degree turn. The diagram includes a 355-degree turn angle of 355 degrees. The diagram includes a 355-degree turn angle of 355 degrees.

CATEGORY	A	B	C	D
LPV DA	1592-7/8	317 (400-7/8)		NA
LNAV/VNAV DA	1592-7/8	317 (400-7/8)		NA
LNAV MDA	1700-1	425 (500-1)	1700-1 1/4 425 (500-1 1/4)	NA
CIRCLING	1760-1	485 (500-1)	1760-1 1/2 485 (500-1 1/2)	NA