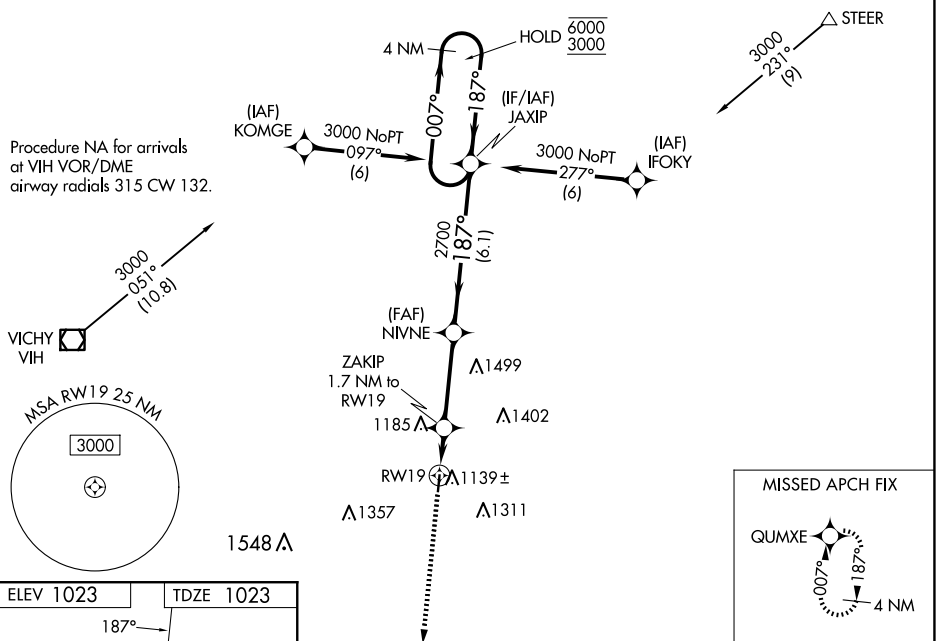


RNAV (GPS) RWY 19
CUBA MUNI (UBX)

NA Circling to Rwy 1 NA at night. Circling NA for Cat B east of Rwy 19-1. Rwy 19 helicopter visibility reduction below $\frac{3}{4}$ SM NA. Baro-VNAV NA. Use Rolla/Vichy altimeter setting; when not received, use Fort Leonard Wood altimeter setting and increase all DA 54 feet and all MDA 60 feet; increase LPV Cat A/B and LNAV/VNAV Cat A/B visibilities $\frac{1}{4}$ SM.

MISSED APPROACH: Climb to 3000
direct QUMXE and hold.

VIH ASOS 119.025	KANSAS CITY CENTER 128.35 284.675	UNICOM 122.8 (CTAF) 0
----------------------------	---	---------------------------------



CATEGORY	A	B	C	D
LPV DA	1329-1	306 (400-1)		NA
RNAV/VNAV DA	1357-1 $\frac{1}{8}$	334 (400-1 $\frac{1}{8}$)		NA
RNAV MDA	1460-1	437 (500-1)		NA
C CIRCLING	1560-1	537 (600-1)		NA

NC-3, 10 JUL 2025 to 07 AUG 2025