

WAAS CH 78238 W17A	APP CRS 174°	Rwy Idg 4149 TDZE 1232 Apt Elev 1232
----------------------------------------	------------------------	-----------------------------------------------------------------

RNAV (GPS) RWY 17

GEORGE L SCOTT MUNI (3Y2)

RNP APCH.

NA For uncompensated Baro-VNAV systems, LNAV/VNAV NA below -17°C (2°F) or above 54°C (130°F). Baro-VNAV and VDP NA when using Decorah altimeter setting. Helicopter visibility reduction below $\frac{3}{4}$ SM NA. Obtain local altimeter setting on CTAF; when not received, use Decorah altimeter setting and increase LPV and LNAV/VNAV DA to 1533 all Cats, increase all MDA 60 feet, and LNAV Cat C visibility $\frac{1}{8}$ mile.

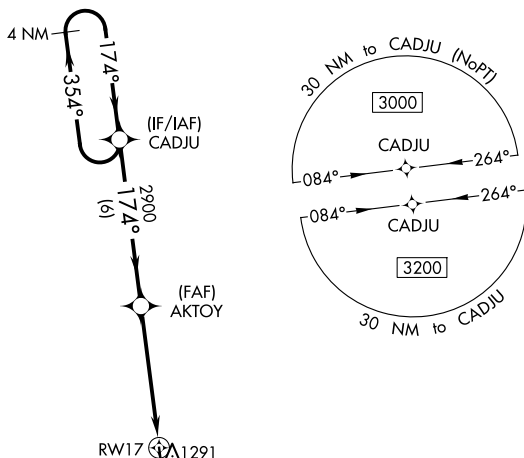
MISSED APPROACH:
Climb to 3200 direct
KIRTS and hold.

MINNEAPOLIS CENTER

118.85

UNICOM

122.8 (CTAF) L



MISSED APCH FIX

A1726

1545 A

A 1617

4 NM
Holding Pattern

VGSI and RNAV glidepath not coincident
(VGSI Angle 3.00/TCH 41)

[illegible]

GP 3.00°
TCH 41

CATEGORY	A	B	C	D
LPV DA	1482-1	250 (300-1)		NA
INAV/ VNAV DA	1482-1	250 (300-1)		NA
INAV MDA	1580-1	348 (400-1)		NA
C CIRCLING	1740-1	508 (600-1)	1860-1 ³ / ₄ 628 (700-1 ³ / ₄)	NA

ELEV	1232		TDZE	1232
------	------	--	------	------

MIRL Rwy 17-35