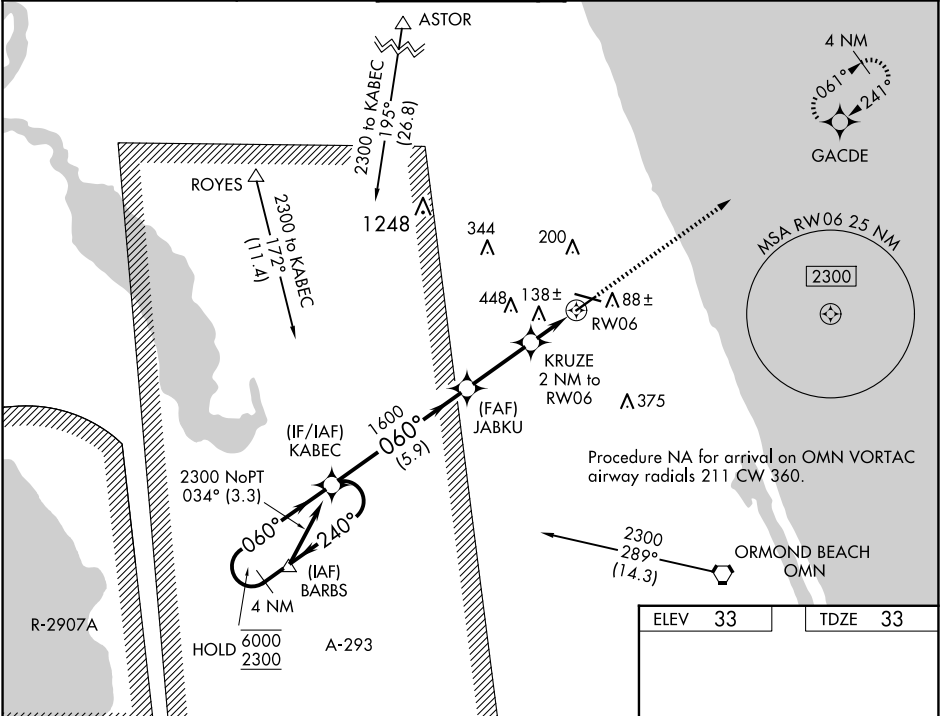


WAAS CH <b>49209</b> <b>W06A</b>	APP CRS <b>060°</b>	Rwy Idg TDZE <b>33</b> Apt Elev <b>33</b>	<b>5001</b>
--	------------------------	---	-------------

RNAV (GPS) RWY 6

FLAGLER EXEC (FIN)

RNP APCH-GPS.		MISSED APPROACH: Climb to 2300 direct GACDE and hold.			
⚠ Circling NA to Rwy 18W and 36W. Circling Rwy 11, 29 NA at night. Rwy 6 helicopter visibility reduction below ¼ SM NA. For uncompensated Baro-VNAV systems, LNAV/VNAV NA below -15°C or above 54°C.					
ATIS <b>128.325</b>	DAYTONA APP CON <b>125.8 269.075</b>	FLAGLER TOWER ★ <b>118.95 (CTAF) 0</b>	GND CON <b>121.75</b>	CLNC DEL <b>121.75</b>	UNICOM <b>123.0</b>



4 NM Holding Pattern		KABEC		2300		GACDE	
6000 ← 240°		JABKU 1600		KRUZE 2 NM to RW06		1 NM to RW06	
2300 → 060°		1600		700		RW06	
GP 3.00° TCH 41		5.9 NM		2.8 NM		1 NM	
CATEGORY	A	B	C	D			
LPV DA	312-7/8 279 (300-7/8)						
LNAV/VNAV DA	292-3/4 259 (300-3/4)						
LNAV MDA	400-1 367 (400-1)						
CIRCLING	500-1	467 (500-1)	760-2 727 (800-2)	760-2 1/4 727 (800-2 1/4)			

