

PALM COAST, FLORIDA

AL-6440 (FAA)

23110

WAAS CH 56243 W29A	APP CRS 292°	Rwy Idg 5500 TDZE 33 Apt Elev 33
--	------------------------	---

RNAV (GPS) RWY 29

FLAGLER EXEC (FIN)

RNP APCH.

T Circling NA to Rwy 18W and 36W. Rwy 29
A helicopter visibility reduction below $\frac{3}{4}$ SM NA.

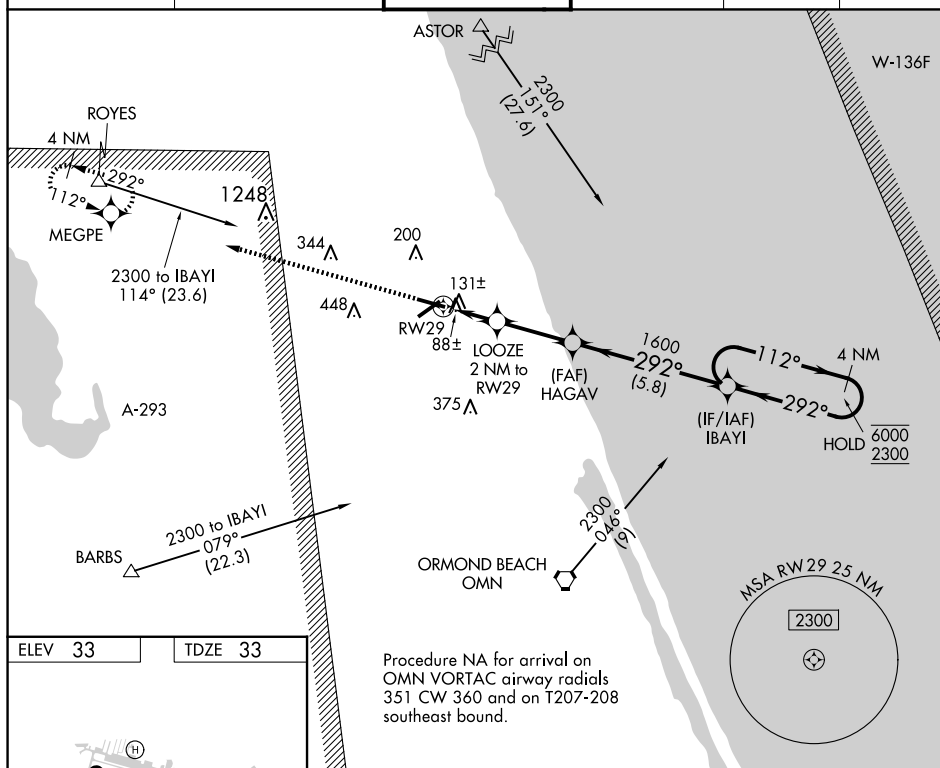
MISSED APPROACH: Climb to 2300 direct MEGPE and hold.

ATIS
128.325

DAYTONA APP CON
125.8 269.075

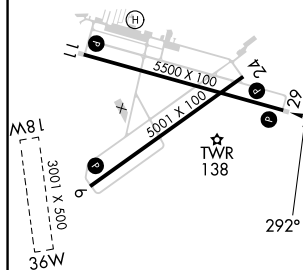
FLAGLER TOWER ★
118.95 (CTAF) L

GND CON
121.75

CLNC DEL
121.75UNICOM
123.0

ELEV 33

TDZE 33



REIL Rwys 6, 11, 24, and 29 **L**
MIRL Rwys 6-24 and 11-29 **L**

PALM COAST, FLORIDA

Amdt 1B 05NOV20

29°28'N-81°12'W

FLAGLER EXEC (FIN)

RNAV (GPS) RWY 29