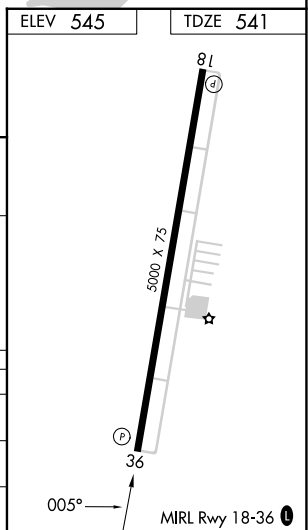
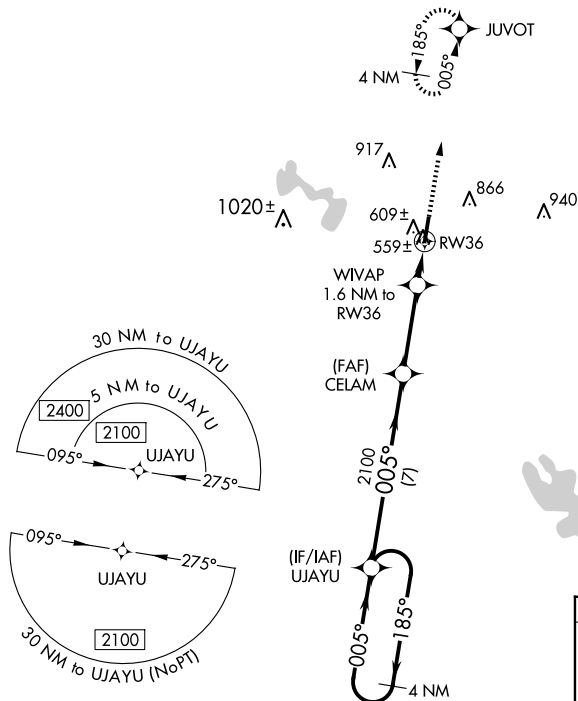


24025

RNAV (GPS) RWY 36
MEXIA-LIMESTONE COUNTY (LXY)

MISSED APPROACH:
Climb to 2400 direct
JUVOT and hold.

AWOS-3 127.275	WACO APP CON★ 127.65 352.0	UNICOM 122.8 (CTAF)
--------------------------	--------------------------------------	-------------------------------



CATEGORY	A	B	C	D
LP MDA	860-1	319 (400-1)		NA
LNAV MDA	880-1	339 (400-1)		NA
CIRCLING	960-1 415 (500-1)	1180-1 635 (700-1)	1220-2 675 (700-2)	NA

MEXIA-LIMESTONE COUNTY (LXY)
RNAV (GPS) RWY 36

SC-5, 10 JUL 2025 to 07 AUG 2025

SC-5. 10 JUL 2025 to 07 AUG 2025