

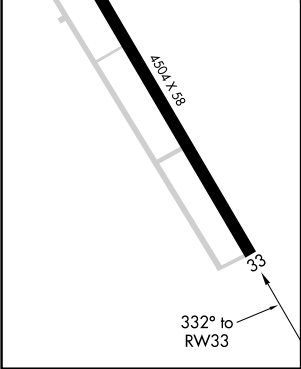
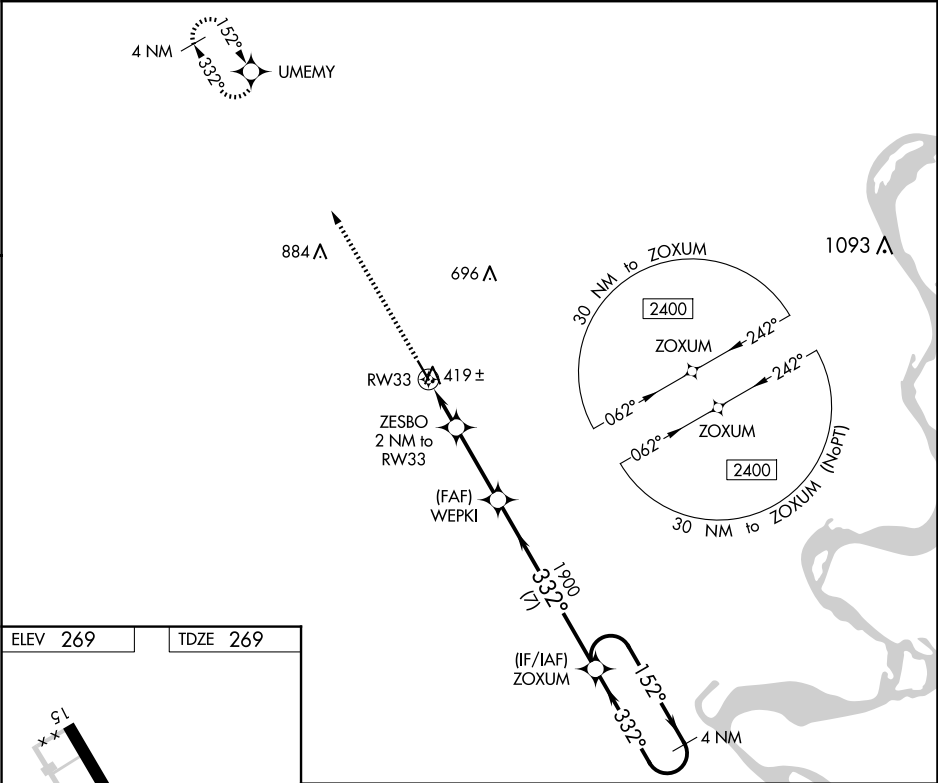
APP CRS 332°	Rwy Idg	4504
	TDZE	269
	Apt Elev	269

RNAV (GPS) RWY 33

GIDEON MEML (M85)

<div><div></div><div>NA</div></div>	DME/DME RNP-0.3 NA. Procedure NA at night. Helicopter visibility reduction below 1 SM NA. Obtain Arkansas Intl altimeter setting on CTAF (122.7), when not received, use Poplar Bluff altimeter setting and increase all MDA 20 feet and Circling Cat C visibility ¼ mile.	MISSED APPROACH: Climb to 2400 direct UMEMY and hold.

BYH CTAF 122.7	MEMPHIS CENTER 133.65 292.15	CTAF 122.9
-------------------	---------------------------------	---------------



<div>2400</div> <div>↑</div>		<div>UMEMY</div> <div>✦</div>				
<div>RW33</div> <div></div>		<div>ZESBO</div> <div>2 NM to RW33</div>		<div>WEPKI</div> <div>3.00°</div> <div>TCH 40</div>		
<div>940</div>		<div>1900</div>		<div>332°</div>		
<div>2 NM</div>		<div>3 NM</div>		<div>7 NM</div>		
				<div>ZOXUM</div>		
				<div>4 NM Holding Pattern</div>		
				<div>152°</div> <div>← 332°</div> <div>2400</div>		
CATEGORY	A		B		C	D
LNAV MDA	740-1 471 (500-1)		740-1 ¹³ / ₈ 471 (500-1 ³ / ₈)		NA	
CIRCLING	860-1 591 (600-1)		900-1 ³ / ₄ 631 (700-1 ³ / ₄)		NA	