



APP CRS 152°	Rwy Idg 4504 TDZE 268 Apt Elev 269
------------------------	---

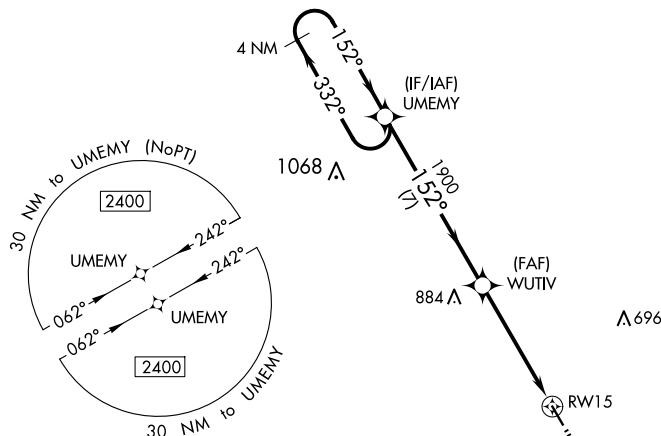
RNAV (GPS) RWY 15

GIDEON MEML (M85)

	DME/DME RNP-0.3 NA. Procedure NA at night. Helicopter visibility reduction
 NA	below 1 SM NA. Obtain Arkansas Intl altimeter setting on CTAF (122.7), when not received, use Poplar Bluff Muni altimeter setting and increase all MDA 20 feet and Circling Cat C visibility $\frac{1}{8}$ mile.

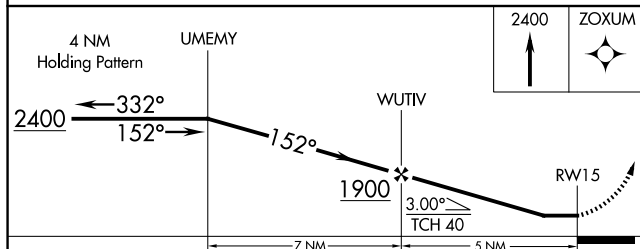
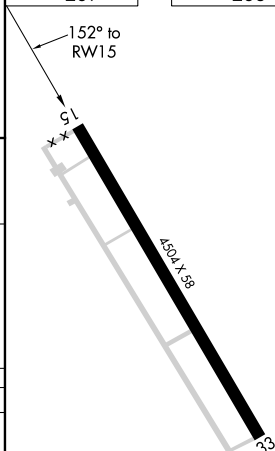
MISSED APPROACH: Climb to 2400
direct ZOXUM and hold.

BYH CTAF 122.7	MEMPHIS CENTER 133.65 292.15	CTAF 122.9
--------------------------	--	----------------------



MISSED APCH FIX

ELEV 269		TDZE 268
----------	--	----------



CATEGORY	A	B	C	D
LNAV MDA	820-1	552 (600-1)	820-1 ⁵ / ₈ 552 (600-1 ⁵ / ₈)	NA
CIRCLING	860-1	591 (600-1)	900-1 ³ / ₄ 631 (700-1 ³ / ₄)	NA