

WAAS
CH **82523**
W23A

APP CRS
228°

Rwy Idg
TDZE **1430**
Apt Elev **1432**

RNAV (GPS) RWY 23

WAYNE MUNI/STAN MORRIS FLD (L/G)

RNP APCH.

▼

⚠

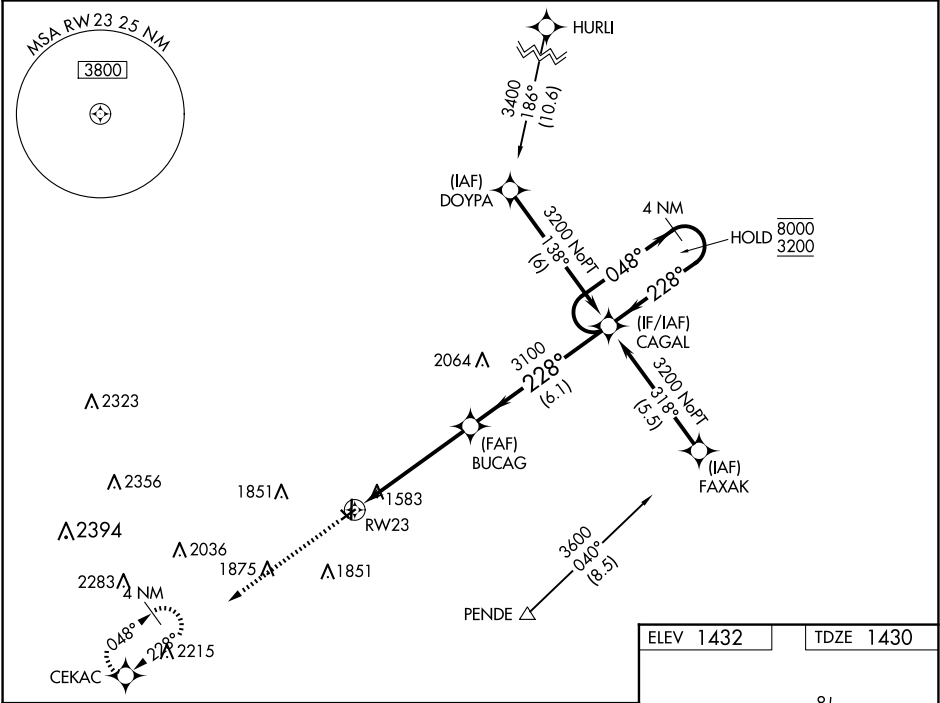
Circling NA to Rwy 13 and 31. Rwy 23 helicopter visibility reduction below ¾ SM NA. For uncompensated Baro-VNAV systems, LNAV/VNAV NA below -17°C or above 54°C.

MISSED APPROACH: Climb to 3400 direct CEKAC and hold.

AWOS-3
120.125

SIoux CITY APP CON ★
124.6 307.0

UNICOM
122.8 (CTAF) ①



3400

CEKAC

*LNAV only

*1.5 NM to RW23

BUCAG

CAGAL

3100

228°

3100

4 NM Holding Pattern

048° → 8000

← 228° 3200

GP 3.00°

TCH 40

1.5 NM

3.6 NM

6.1 NM

CATEGORY	A	B	C	D
LPV DA	1866-1½	436 (500-1½)		NA
LNAV/VNAV DA	1869-1½	439 (500-1½)		NA
LNAV MDA	1940-1	510 (600-1)		NA
CIRCLING	2000-1	568 (600-1)		NA

