

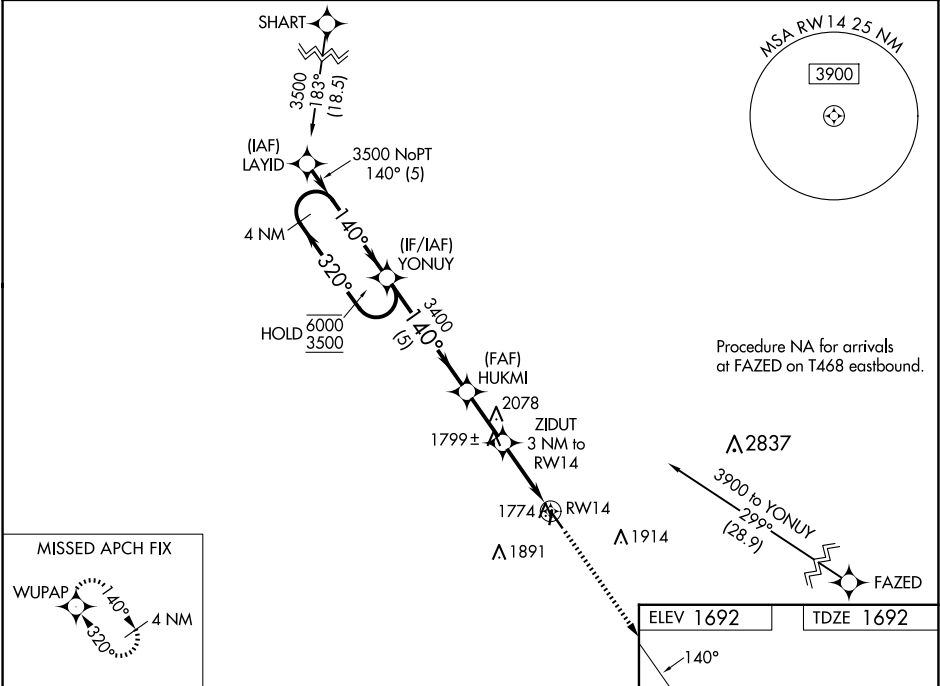
WAAS CH <b>53428</b> <b>W14A</b>	APP CRS <b>140°</b>	Rwy Idg TDZE <b>1692</b> Apt Elev <b>1692</b>	<b>4301</b>
--	------------------------	---	-------------

RNAV (GPS) RWY 14

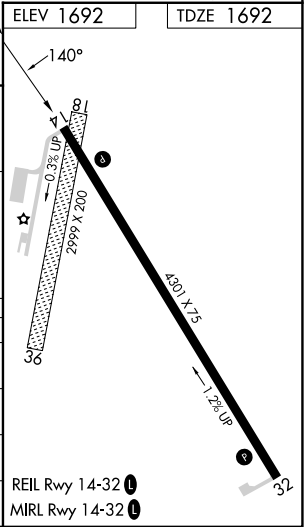
SUPERIOR MUNI (12K)

RNP APCH - GPS.	<div>MISSED APPROACH: Climb to 3300 direct WUPAP and hold.</div>
<div><div><div></div><div>NA</div></div><div>Rwy 14 helicopter visibility reduction below ¾ SM NA. Baro-VNAV NA. Circling NA to Rwy 18 and 36. Use HJH altimeter setting; when not received, use HSI altimeter setting; increase DA to 2072 feet and all MDAs 60 feet; increase Circling visibility Cat C ¼ SM.</div></div>	

HJH AWOS-3 <b>118.525</b>	MINNEAPOLIS CENTER <b>119.4 278.8</b>	UNICOM <b>123.0 (CTAF) 1</b>
------------------------------	--	---------------------------------



4 NM Holding Pattern				
YONUUY				
6000 ← 320°				
3500 → 140°				
GP 3.00° TCH 40				
5 NM				
HUKMI 3400				
ZIDUT 3 NM to RWY 14				
RWY 14 2680				
3300 WUPAP				
140°				
81				
0.3% UP				
2999 X 200				
4301 X 75				
1.2% UP				
REIL Rwy 14-32 1				
MIRL Rwy 14-32 1				
CATEGORY	A	B	C	D
LPV DA	2026-1 334 (400-1)			NA
LNAV/VNAV DA	2026-1 334 (400-1)			NA
LNAV MDA	2140-1	448 (500-1)	2140-1 ⅜ 448 (500-1 ⅜)	NA
CIRCLING	2360-1	668 (700-1)	2360-1 ¼ 668 (700-1 ¼)	NA



NC-2, 10 JUL 2025 to 07 AUG 2025

NC-2, 10 JUL 2025 to 07 AUG 2025