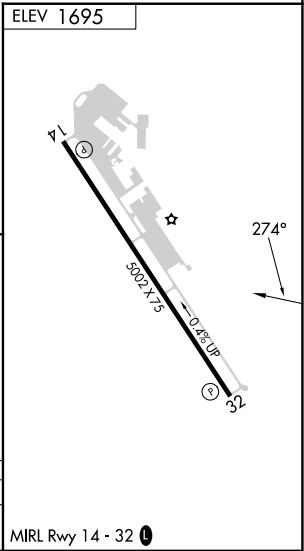
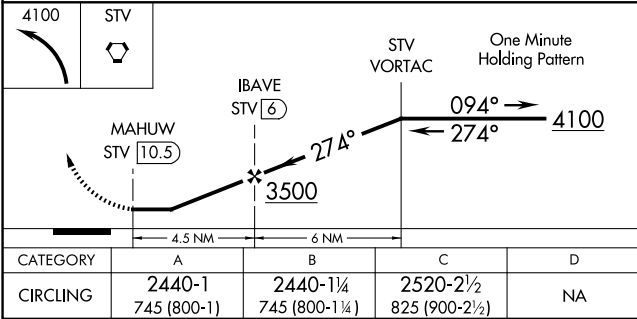
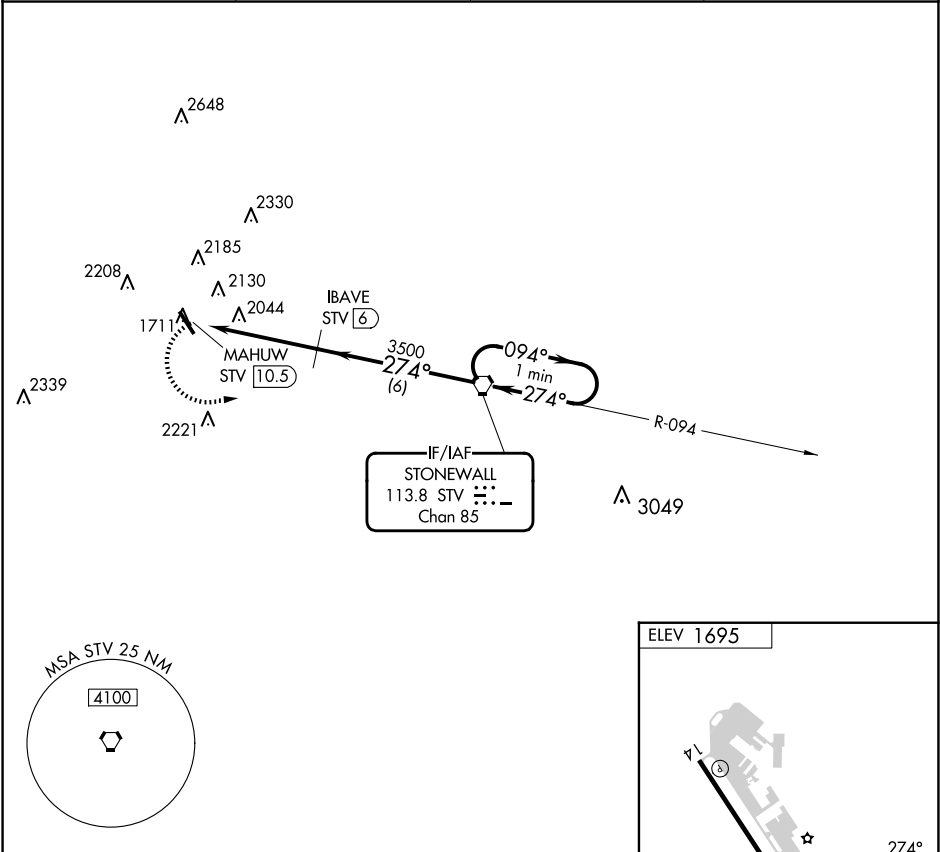


VORTAC STV <b>113.8</b> Chan <b>85</b>	APP CRS <b>274°</b>	Rwy Ldg TDZE Apt Elev <b>N/A</b> <b>N/A</b> <b>1695</b>
--	------------------------	--

VOR/DME-A  
GILLESPIE COUNTY (T82)

<p><b>▼</b> <b>▲</b></p> <p>When local altimeter setting not received, use Kerrville altimeter setting and increase MDA 60 feet and Cat C visibility ¼ mile.</p>	MISSED APPROACH: Climbing left turn to 4100 direct STV VORTAC and hold.
--	---

AWOS-3 <b>120.0</b>	HOUSTON CENTER <b>134.2 307.3</b>	GCO <b>121.725</b>	UNICOM <b>122.7 (CTAF) 0</b>
------------------------	--------------------------------------	-----------------------	---------------------------------



SC-3, 10 JUL 2025 to 07 AUG 2025

SC-3, 10 JUL 2025 to 07 AUG 2025