

WAAS CH 81930 W32A	APP CRS 321°	Rwy Ldg 5002 TDZE 1685 Apt Elev 1695
--	------------------------	---

RNAV (GPS) RWY 32

GILLESPIE COUNTY (T82)

RNP APCH.



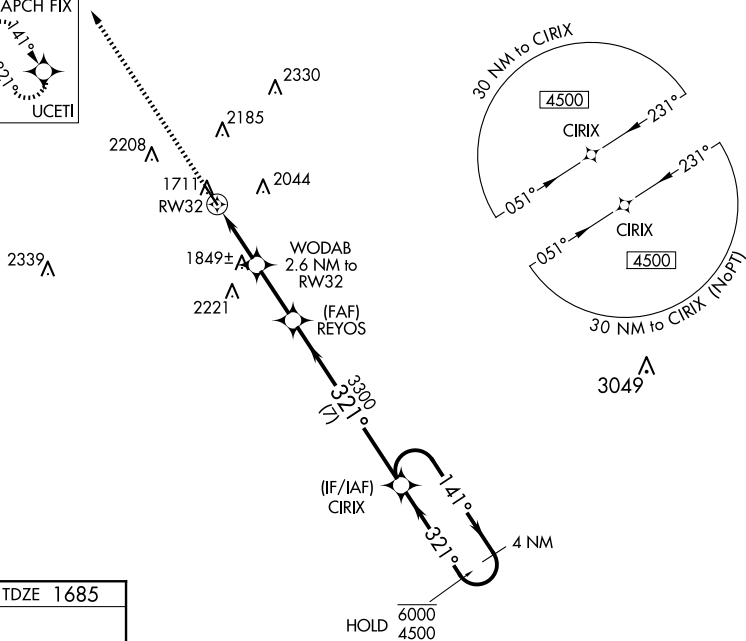
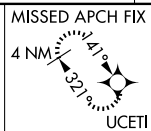
Rwy 32 helicopter visibility reduction below $\frac{3}{4}$ SM NA.
For uncompensated Baro-VNAV systems, LNAV/VNAV
NA below -18°C or above 54°C.

MISSED APPROACH: Climb to 4000 direct UCET and hold.

AWOS-3
120.0

HOUSTON CENTER
134.2 307.3

GCO
121.725

UNICOM
122.7 (CTAF) **L**ELEV 1695TDZE 1685