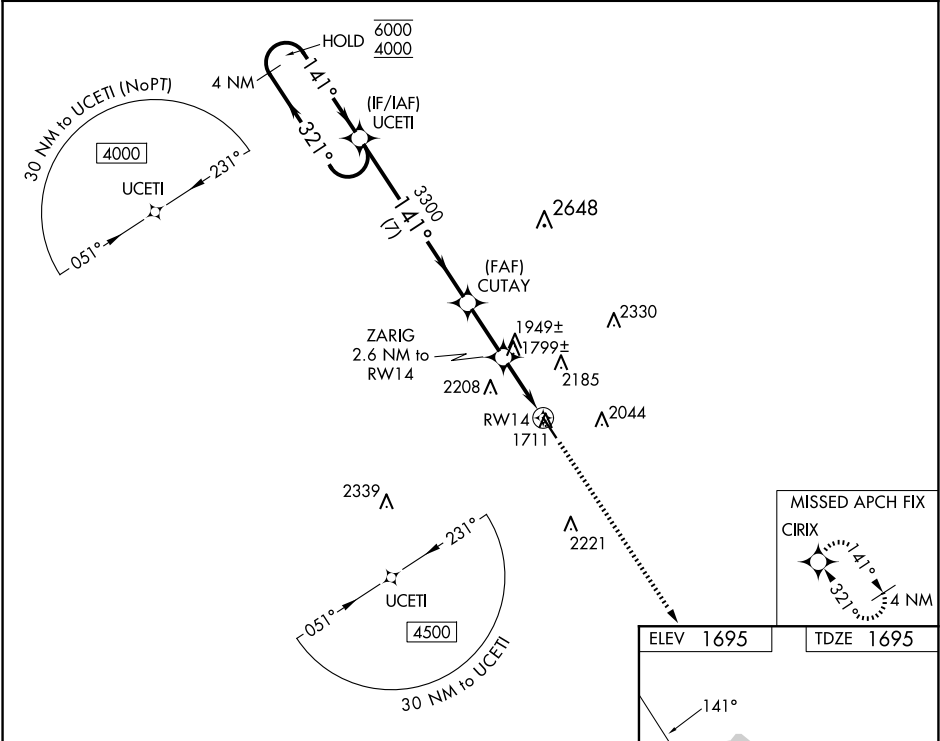


WAAS CH 78030 W14A	APP CRS 141°	Rwy Ldg TDZE 1695 Apt Elev 1695	5002
--	------------------------	---	-------------

RNAV (GPS) RWY 14

GILLESPIE COUNTY (T82)

RNP APCH.		MISSED APPROACH: Climb to 4500 direct CIRIX and hold.	
Rwy 14 helicopter visibility reduction below ¾ SM NA.			
AWOS-3 120.0	HOUSTON CENTER 134.2 307.3	GCO 121.725	UNICOM 122.7 (CTAF) 0



4 NM Holding Pattern		Visual Segment - Obstacles.		4500	CIRIX
6000 4000		UCETI		CUTAY	ZARIG 2.6 NM to RW14
321° 141°		141°		3300	2560
		7 NM		2.3 NM	1.6 NM
CATEGORY		A	B	C	D
LP MDA		2060-1 365 (400-1)		NA	
LNAV MDA		2200-1 505 (600-1)		2200-1 505 (600-1)	
CIRCLING		2200-1 505 (600-1)		2520-2 825 (900-2)	

