

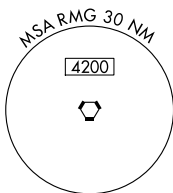
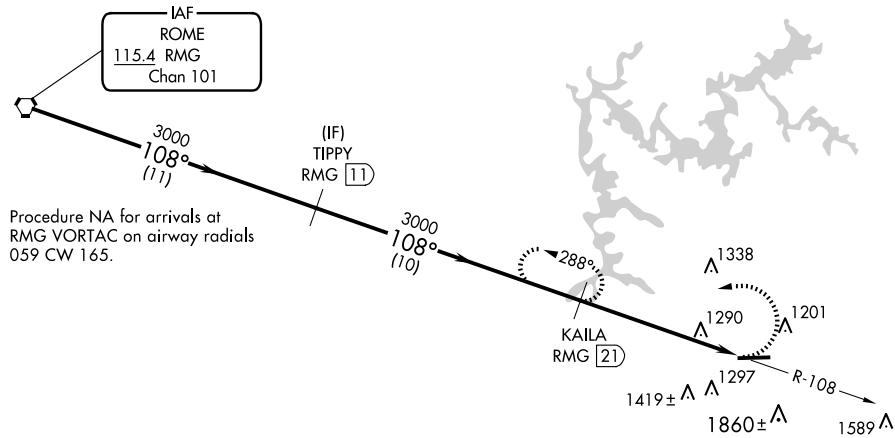
25079

VOR/DME RWY 9  
COBB COUNTY INTL/MCCOLLUM FLD (RYY)

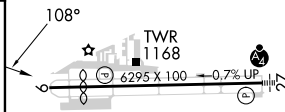
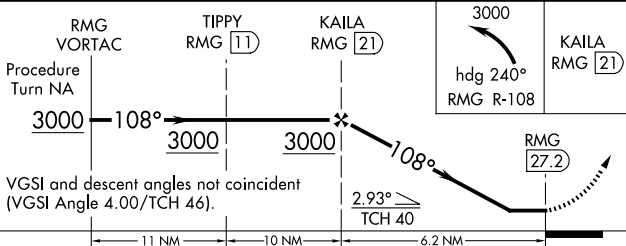
Rwy 9 helicopter visibility reduction below 1 SM NA. When local altimeter setting not received, use ATL altimeter setting and increase all MDAs 60 feet and S-9 Cat A/C/D visibilities ¼ mile.

**MISSED APPROACH:** Climbing left turn to 3000 via heading 240° and RMG R-108 to KAILA/21 DME and hold.

ATIS <b>128.125</b>	ATLANTA APP CON <b>121.0 268.7</b>	MCCOLLUM TOWER ★ <b>125.9 (CTAF) 0</b>	GND CON <b>119.0</b>	CLNC DEL <b>119.0</b>	CLNC DEL <b>121.0 268.7</b> (When twr closed)	UNICOM <b>122.7</b>
------------------------	---------------------------------------	---	-------------------------	--------------------------	---	------------------------



ELEV 1040		TDZE 1028
-----------	---	-----------



CATEGORY	A	B	C	D
S-9	1900-1 872 (900-1)	1900-1¼ 872 (900-1¼)	1900-2½ 872 (900-2½)	1900-2¾ 872 (900-2¾)
CIRCLING	1900-1¼	860 (900-1¼)	2220-3	1180 (1200-3)

HIRL Rwy 9-27 **L**

34°01'N-84°36'W

VOR/DME RWY 9

SE-4, 10 JUL 2025 to 07 AUG 2025