

25079

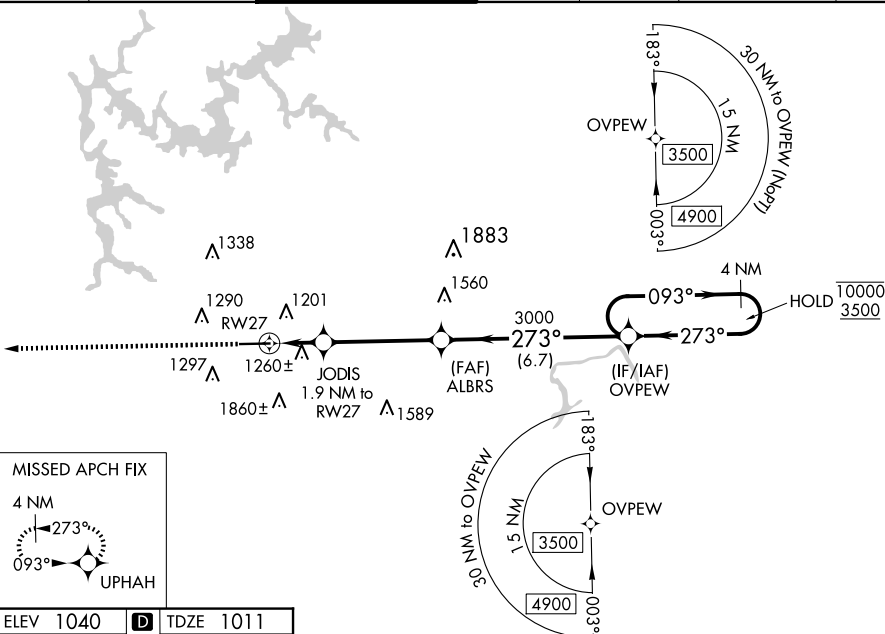
RNAV (GPS) RWY 27
COBB COUNTY INTL/MCCOLLUM FLD (RYY)

T Inop table does not apply to LPV. For uncompensated Baro-VNAV systems, LNAV/VNAV NA below -17°C or above 54°C. For inop ALS, increase LNAV/VNAV all Cats and LNAV Cats C and D visibility to 1% SM.

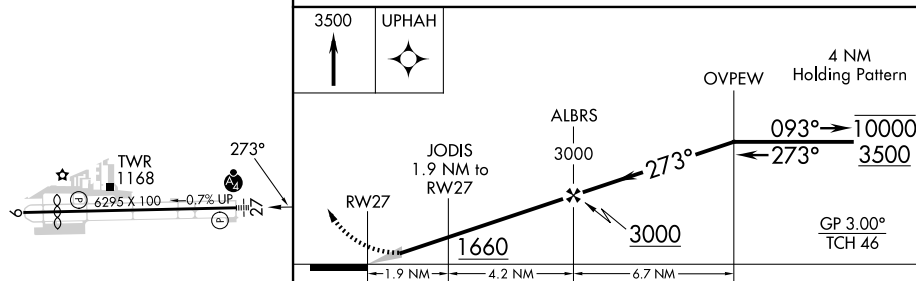



MISSED APPROACH:
Climb to 3500 direct
UPHAH and hold.

ATIS	ATLANTA APP CON		MCCOLLUM TOWER ★	GND CON	CLNC DEL	CLNC DEL	UNICOM
128.125	121.0	268.7	125.9 (CTAF) L	119.0	119.0	121.0 268.7 (When twr closed)	122.7



ELEV 1040	D	TDZE 1011
-----------	----------	-----------



CATEGORY		A	B	C	D
LPV	DA	1211- ³ / ₄ 200 (200- ³ / ₄)			
LNAY/ VNAV	DA	1520-1 ¹ / ₄ 509 (500-1 ¹ / ₄)			
LNAY	MDA	1520- ³ / ₄	509 (500- ³ / ₄)	1520-1 ¹ / ₄	509 (500-1 ¹ / ₄)
 CIRCLING		1800-1	760 (800-1)	2180-3	1140 (1200-3)

HIRL Rwy 9-27 **L**

ATLANTA, GEORGIA
Amdt 5A 20MAR25

COBB COUNTY INTL/MCCOLLUM FLD (RYY)

34°01'N-84°36'W

RNAV (GPS) RWY 27

SE-4, 10 JUL 2025 to 07 AUG 2025