

LOC/DME I-RYY	APP CRS	Rwy Idg	5374
111.9	273°	TDZE	1011
Chan 56		Apt Elev	1040

ILS or LOC RWY 27

COBB COUNTY INTL/MCCOLLUM FLD (RYY)

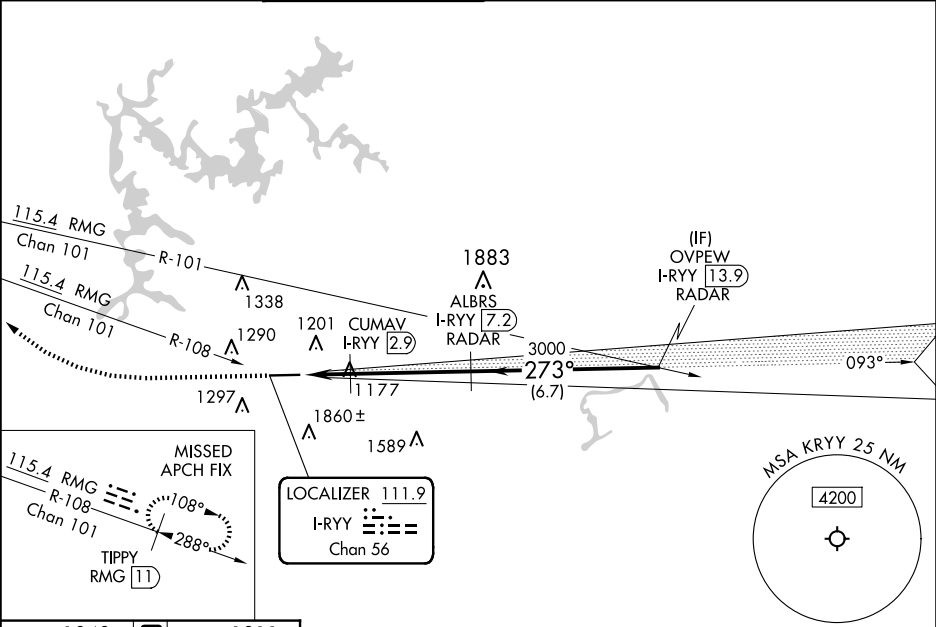
DME required. RADAR required for procedure entry.

Inop table does not apply to S-ILS 27.

MALSF

MISSED APPROACH: Climb to 1600 then climbing right turn to 3500 on heading 300° and on RMG VORTAC R-108 to TIPPY/RMG 11 DME and hold.

ATIS	ATLANTA APP CON	MCCOLLUM TOWER ★	GND CON	CLNC DEL	CLNC DEL	UNICOM
128.125	121.0 268.7	125.9 (CTAF) 0	119.0	119.0	121.0 268.7 (When twr closed)	122.7



ELEV 1040	D	TDZE 1011
-----------	---	-----------

TWR 1168

6295 X 100 -0.7% UP

273°

1600

3500

hdg 300°

RMG R-108

TIPPY RMG 11

ALBRS I-RYY [7.2] RADAR

OVPEW I-RYY [13.9] RADAR

I-RYY [1.1]

CUMAV I-RYY [2.9]

3000

273°

3500

GS 3.00° TCH 46

1.8 NM

4.3 NM

6.7 NM

CATEGORY	A	B	C	D
S-ILS 27	1211-¾ 200 (200-¾)			
S-LOC 27	1620-¾	609 (600-¾)	1620-1½	609 (600-1½)
CIRCLING	1800-1	760 (800-1)	2180-3	1140 (1200-3)
CUMAV FIX MINIMUMS				
S-LOC 27	1480-¾	469 (500-¾)	1480-1½	469 (500-1½)
CIRCLING	1800-1	760 (800-1)	2180-3	1140 (1200-3)

HIRL Rwy 9-27 0

FAF to MAP 6.1 NM

Knots	60	90	120	150	180
Min:Sec	6:06	4:04	3:03	2:26	2:02