

WAAS CH 40033 W08A	APP CRS 084°	Rwy Idg TDZE Apt Elev	5004 170 176
--	------------------------	-----------------------------	---

RNAV (GPS) RWY 8

CAMILLA-MITCHELL COUNTY (CXU)

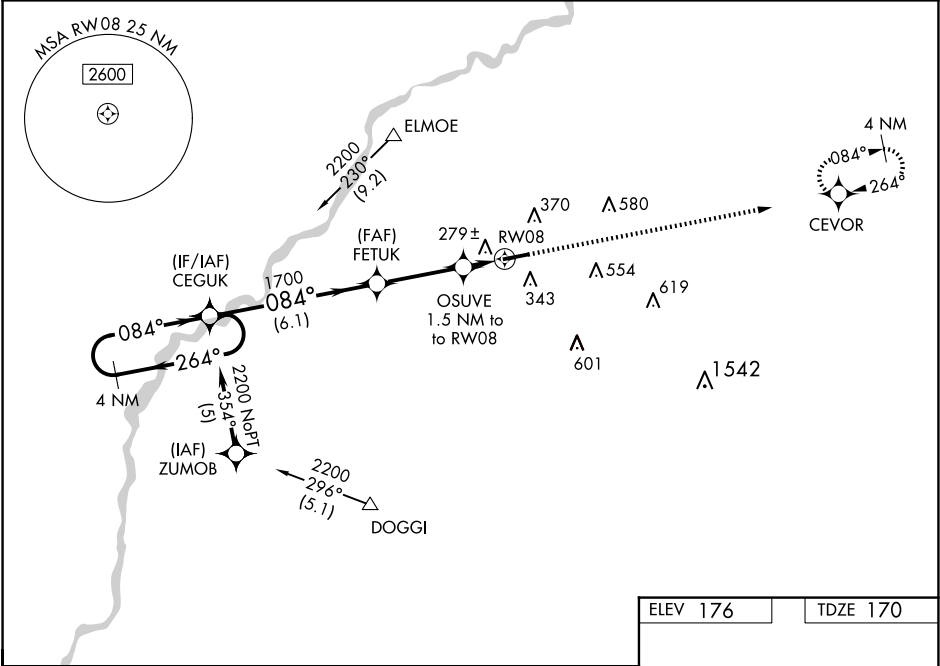
⚠

NA

Baro-VNAV NA when using Albany altimeter setting. For uncompensated Baro-VNAV systems, LNAV/VNAV NA below -15°C (5°F) or above 54°C (130°F). DME/DME RNP-0.3 NA. When local altimeter setting not received, use Albany altimeter setting and increase LPV DA to 513 feet; increase LNAV/VNAV DA to 623 feet; increase all MDAs 60 feet and LNAV Cats C/D and Circling Cat D visibility ¼ SM.

MISSED APPROACH:
Climb to 2400 direct CEVOR and hold.

AWOS-3T 118.675	JACKSONVILLE CENTER 125.75 363.075	UNICOM 122.8 (CTAF) 0
---------------------------	--	---------------------------------



4 NM Holding Pattern

VGSI and RNAV glidepath not coincident (VGSI Angle 3.00/TCH 39).

2400 CEVOR

GP 3.00° TCH 52

CEVOR

*LNAV only.

CEVOR

221±

5004 X 100

26

084°

1700

1700

OSUVE 1.5 NM to to RW08

RW08

*680

6.1 NM

3.2 NM

1.5

CATEGORY	A	B	C	D
LPV DA		465-1	295 (300-1)	
LNAV/VNAV DA		575-1⅜	405 (400-1⅜)	
LNAV MDA		540-1	370 (400-1)	
CIRCLING	720-1 544 (600-1)	760-1 584 (600-1)	920-2¼ 744 (800-2¼)	940-2½ 764 (800-2½)

REIL Rwy 8 and 26 0

MIRL Rwy 8-26 0