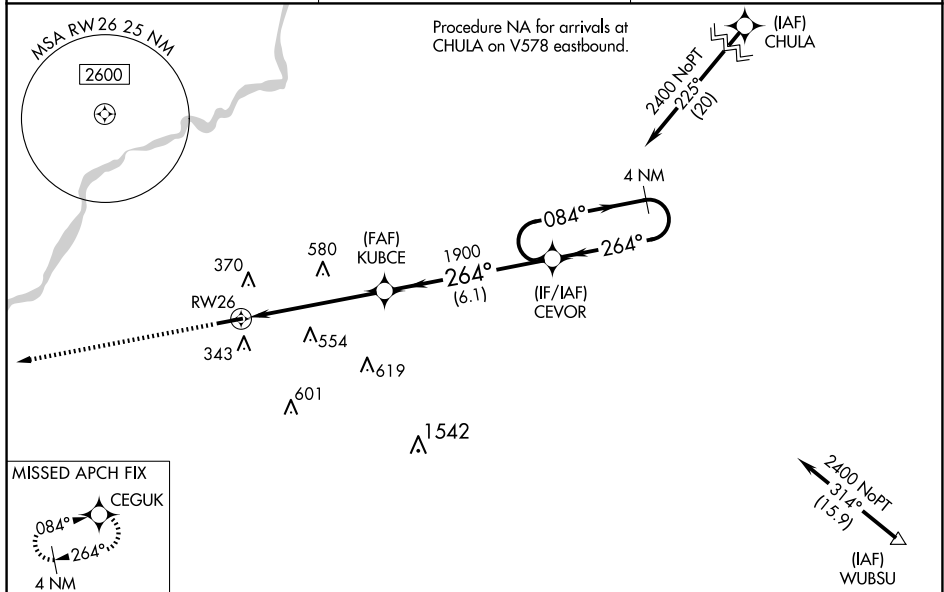


RNAV (GPS) RWY 26

CAMILLA-MITCHELL COUNTY (CXU)

MISSED APPROACH:
Climb to 2200 direct
CEGUK and hold.

AWOS-3T 118.675	JACKSONVILLE CENTER 125.75 363.075	UNICOM 122.8 (CTAF) ①
---------------------------	--	---------------------------------



ELEV 176 TDZE 176

2200 CEGUK VGS1 and RNAV glidepath not coincident (VGS1 Angle 3.00/TCH 39).

264° 26° 221± 5004 X 100

RW26 1.4 NM to RW26 KUBCE 1900 264° 1900 CEVOR 4 NM Holding Pattern 084° 2400 264° GP 3.00° TCH 58

CATEGORY	A	B	C	D
LPV DA	505-1	329 (400-1)		
LNAV/VNAV DA	553-1¼	377 (400-1¼)		
LNAV MDA	660-1	484 (500-1)	660-1⅜ 484 (500-1⅜)	
CIRCLING	720-1 544 (600-1)	760-1 584 (600-1)	920-2¼ 744 (800-2¼)	940-2½ 764 (800-2½)

REIL Rwy 8 and 26
MIRL Rwy 8-26