

COPTER ILS or LOC RWY 25

LOC/DME I-MUI 111.75 Chan 54(Y)	APCH CRS 250°	Rwy Idg THRE Arpt Elev 3860 480 487
---------------------------------------	------------------	----------------------------------------------------

[USA]

MUIR AHP (KMUI)

DME required		MISSED APPROACH: Climb to 1700 then climbing left turn to 3000 on RAV VORTAC R-193 to BAARN and hold, continue climb-in-hold to 3000.	
▼ Use KMDT altimeter when local altimeter not available. When RAV VOR out of service, RNAV required to BAARN. Non-RNAV equipped aircraft expect RADAR vectors.			
▲			
ASOS 124.175	HARRISBURG APP/DEP CON 118.25 269.45	TOWER ★ 126.2(CTAF) 290.325	GND CON 135.675 269.525

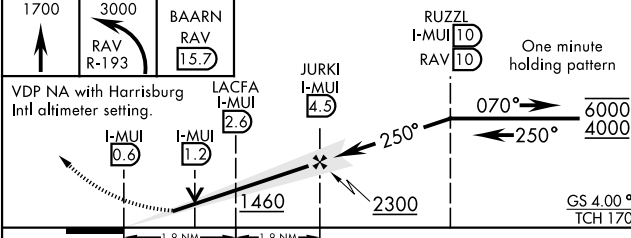
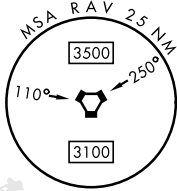
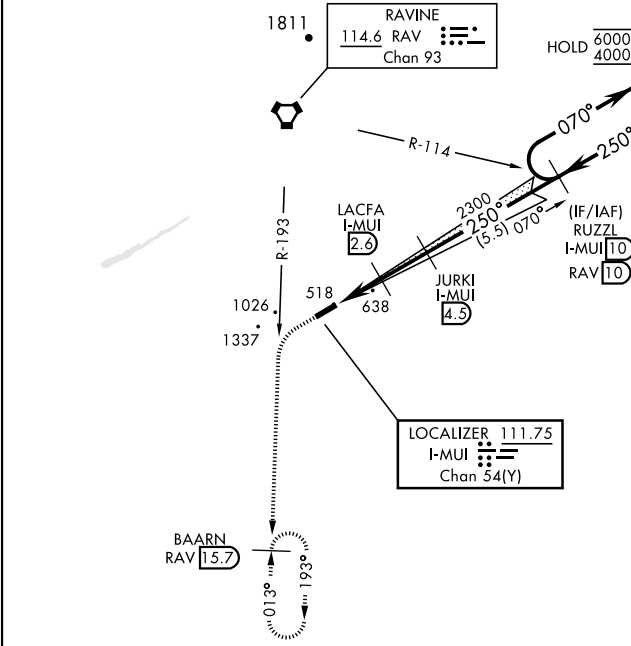
NOT FOR CIVIL USE

Limit all segments to 90 KIAS.

Knots	60	120	180	240	300	360
V/V(fpm)	435	870	1305	1740	2175	2610
Min climb of 435 ft/NM to 1800-Controlling Obstacle 1337'						

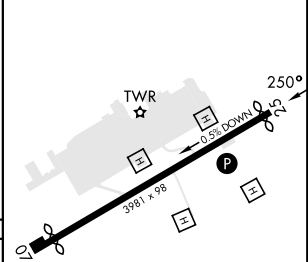
NE-4, 10 JUL 2025 to 07 AUG 2025

NE-4, 10 JUL 2025 to 07 AUG 2025



ELEV 487	THRE 480
Rwy 07 Idg 3631' Rwy 25 Idg 3860'	

CATEGORY	COPTER		
S-ILS 25	821-1	334	(400-1)
S-LOC 25	900-1	413	(500-1)
KMDT (HARRISBURG INTL) ALTIMETER SETTING MINIMUMS			
S-ILS 25	885-1 1/8	398	(400-1 1/8)
S-LOC 25	980-1	493	(500-1)



COPTER ILS or LOC RWY 25