

WAAS CH 87024 W08A	APP CRS 083°	Rwy Ldg TDZE 879 Apt Elev 881
--	------------------------	---

RNAV (GPS) RWY 8

NORTHUMBERLAND COUNTY (N79)

RNP APCH - GPS.

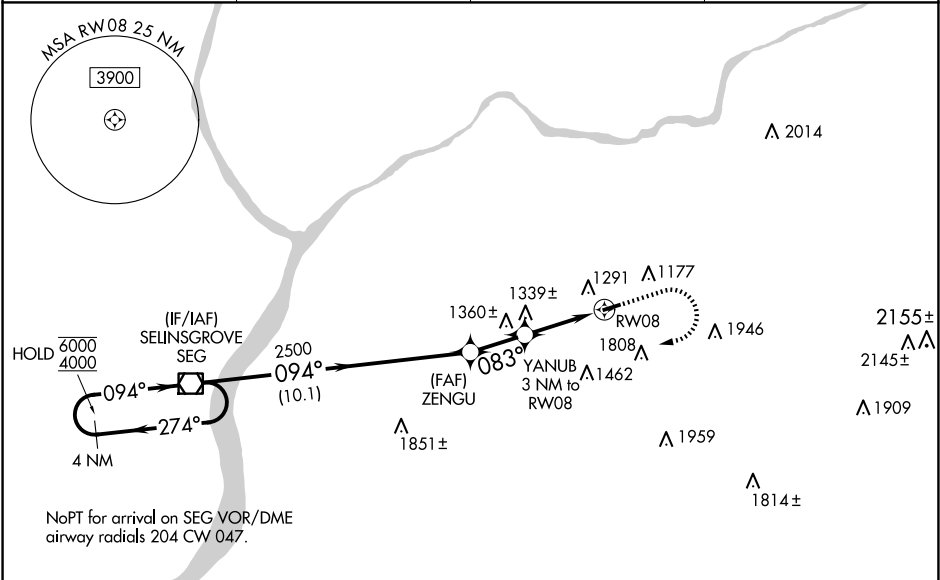
▼

NA

Baro-VNAV and VDP NA when using Selinsgrove altimeter setting. Rwy 8 helicopter visibility reduction below $\frac{3}{4}$ SM NA. For uncompensated Baro-VNAV systems, LNAV/VNAV NA below -16°C or above 54°C. When local altimeter setting not received, use Selinsgrove altimeter setting and increase LPV DA to 1221 feet; increase LNAV/VNAV DA to 1695 feet and all visibilities $\frac{1}{2}$ SM. Increase all MDAs 100 feet and LNAV visibility Cat C $\frac{1}{2}$ SM.

MISSED APPROACH:
Climb to 2300 then climbing right turn to 4000 direct SEG VOR/DME and hold.

AWOS-3 119.175	HARRISBURG APP CON 118.25 269.45	UNICOM 122.8 (CTAF)	121.8 0
--------------------------	--	-------------------------------	-----------------------



ELEV 881

TDZE 879

4 NM Holding Pattern

SEG VOR/DME

GP 3.00° TCH 40

6000 4000

274° 094°

2500 1840

094° 083°

10.1 NM 2.1 NM 0.8 2.2 NM

ZENGU YANUB 3 NM to RW08 2.2 NM to RW08

2300 4000 SEG

0.8% UP

3297 X 75

083°

CATEGORY	A	B	C	D
LPV DA	1129-1	250 (300-1)		NA
LNAV/VNAV DA	1603-2	724 (800-2)		NA
LNAV MDA	1620-1 741 (800-1)	1620-1½ 741 (800-1½)	1620-2 741 (800-2)	NA
CIRCLING	1820-1½ 939 (1000-1½)	1880-1½ 999 (1000-1½)	2120-3 1239 (1300-3)	NA

MIRL Rwy 8-26 **0**
REIL Rws 8 and 26 **0**