

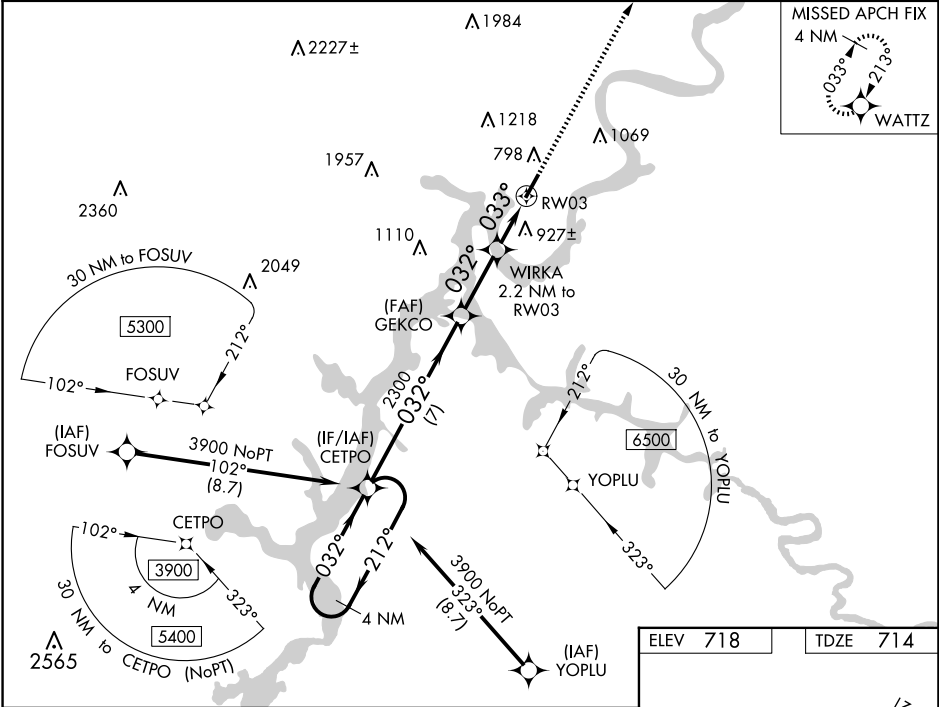
WAAS CH 86922 W03A	APP CRS 033°	Rwy Idg TDZE 714 Apt Elev 718	5001 714 718
--	------------------------	---	---

RNAV (GPS) RWY 3
MARK ANTON (2A0)

Baro-VNAV NA when using Chattanooga altimeter setting. For uncompensated Baro-VNAV systems, LNAV/VNAV NA below -16°C (4°F) or above 39°C (102°F). DME/DME RNP-0.3 NA. VDP NA with Chattanooga altimeter setting. When VGSi inop, Circling Rwy 21 NA at night. When local altimeter setting not received, use Chattanooga altimeter setting: increase LPV DA to 1039 feet, LNAV/VNAV DA to 1288 feet, and visibility LPV and LNAV/VNAV all Cats ½ SM; increase all MDA 80 feet and visibility LNAV Cat C/D ¼ SM and Circling Cat C ½ SM. Rwy 3 helicopter visibility reduction below ¾ SM NA. Rwy 21 helicopter visibility reduction below 1 SM NA.

MISSED APPROACH:
Climb to 3900 direct
WATTZ and hold.

AWOS-3 135.075	CHATTANOOGA APP CON ★ 125.1 379.1	UNICOM 123.0 (CTAF)
--------------------------	---	-------------------------------



4 NM Holding Pattern		CETPO		GEKCO		WIRKA 2.2 NM to RW03		3900 ↑ WATTZ ✦	
3900 ←212° 032°→		032°		2300		032°		*1.4 NM to RW03	
GP 3.00° TCH 31		2300		*1440		033°		*LNAV only.	
		7 NM		2.7 NM		0.8		1.4 NM	
CATEGORY	A	B	C	D					
LPV DA	964-7/8 250 (300-7/8)								
LNAV/VNAV DA	1213-13/4 499 (500-13/4)								
LNAV MDA	1180-1	466 (500-1)	1180-13/8	466 (500-13/8)					
CIRCLING	1380-1 662 (700-1)	1420-1 702 (800-1)	1520-21/4 802 (900-21/4)	1620-3 902 (1000-3)					

