

| | | |
|--|------------------------|---|
| WAAS CH 86539 W25A | APP CRS 253° | Rwy Idg 6501 TDZE 5140 Apt Elev 5176 |
|--|------------------------|---|

RNAV (GPS) RWY 25
ROOSEVELT MUNI (74V)

ROOSEVELT MUNI (74V)

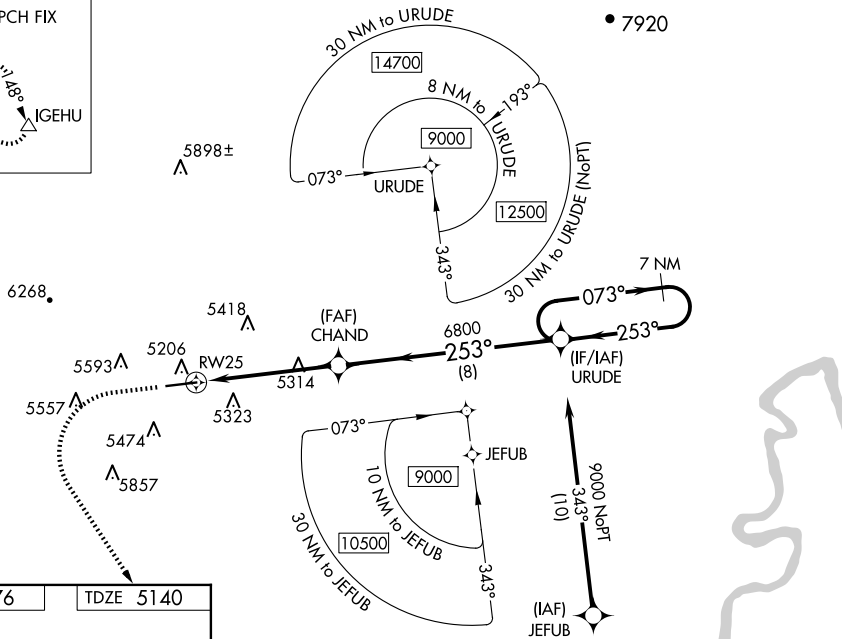
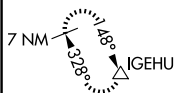
TANA

For uncompensated baro-VNAV systems, LNAV/VNAV NA below -25°C (-13°F) or above 48°C (119°F). Baro-VNAV and VDP NA when using Vernal altimeter setting. DME/DME RNP-0.3 NA. When local altimeter setting not received, use Vernal altimeter setting: increase LPV DA to 5466 and visibility 1/8 SM, LNAV/VNAV DA to 5628 and visibility 1/4 SM; increase all MDAs 80 feet and LNAV visibility Cat C and D 1/8 SM and Circling Cat C visibility 1/4 SM.

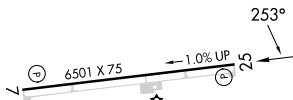
MISSED APPROACH: Climb to 5700 then climbing left turn to 10500 direct IGEHU and hold, continue climb-in-hold to 10500.

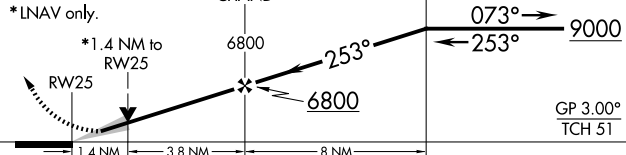
| | | |
|---------------------------|---|---------------------------------|
| AWOS-3P 118.975 | SALT LAKE CENTER 135.77 257.7 | UNICOM 122.8 (CTAF) 0 |
|---------------------------|---|---------------------------------|

MISSED APCH FIX



| | | |
|-----------|--|-----------|
| ELEV 5176 | | TDZE 5140 |
|-----------|--|-----------|



| | | | | | | | |
|---|-----------------------|----------------------|---|--------|-------------------------|--------------------|-------------------------|
| 5700 ↑ | 10500 ↘ | IGEHU △ | VGSJ and RNAV glidepath not coincident (VGSJ Angle 3.00/TCH 40). | | | | |
| *LNAV only. | | | CHAND 6800 | URUDE | 7 NM Holding Pattern | | |
|  | | | 6800 | 253° | 073° → ← 253° | 9000 | |
| RW25 | | | 1.4 NM | 3.8 NM | 8 NM | GP 3.00° TCH 51 | |
| CATEGORY | | A | | B | | C | D |
| LPV DA | | 5390-1 250 (300-1) | | | | | |
| LNAV/ VNAV DA | | 5552-1½ 412 (400-1½) | | | | | |
| LNAV MDA | | 5580-1 440 (500-1) | | | 5580-1¼ 440 (500-1¼) | | |
| CIRCLING | 5740-1 564 (600-1) | | 5900-1 724 (800-1) | | 6020-2½ 844 (900-2½) | | 6340-3 1164 (1200-3) |

ROOSEVELT, UTAH
Amdt 1 10NOV16

40°17'N-110°03'W

ROOSEVELT MUNI (74V)
RNAV (GPS) RWY 25