

| | | |
|--|------------------------|---|
| WAAS CH 81836 W05A | APP CRS 054° | Rwy Idg 5500 TDZE 255 Apt Elev 270 |
|--|------------------------|---|

RNAV (GPS) RWY 5
COLUMBIA/MARION COUNTY (OR)

RNP APCH - GPS.

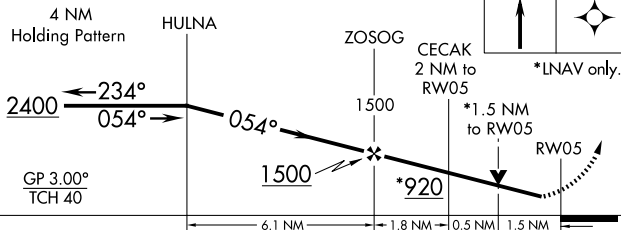
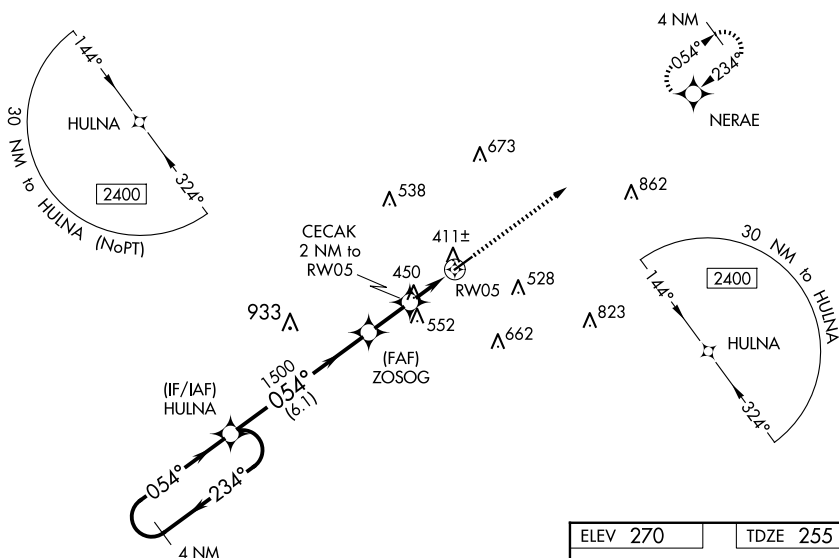
NA For uncompensated Baro-VNAV systems, LNAV/VNAV NA below -15°C or above 54°C. When local altimeter setting not received, use Hattiesburgh/Laurel Rgnl altimeter setting and increase all DA 66 feet and all MDA 80 feet; increase LPV all Cats visibility ½ mile and LNAV/VNAV all Cats and Circling Cat C visibilities ½ mile, increase Circling Cat D visibility ½ mile, increase LNAV Cat C and D visibility ¾ mile. VDP and Baro-VNAV NA when using Hattiesburgh/Laurel Rgnl altimeter setting. Rwy 5 helicopter visibility reduction below ¾ SM NA.


MISSED APPROACH:
Climb to 2400 direct
NERAE and hold.

AWOS-3PT
120.675

HOUSTON CENTER
126.8 327.8

UNICOM
122.8 (CTAF) **L**



| CATEGORY | | A | B | C | D |
|--|-----|--|----------------------|---|--|
| LPV | DA | 505-7 $\frac{7}{8}$ 250 (300-7 $\frac{7}{8}$) | | | |
| RNAV/ VNAV | DA | 743-1 $\frac{5}{8}$ 488 (500-1 $\frac{5}{8}$) | | | |
| RNAV | MDA | 760-1 505 (500-1) | | 760-1 $\frac{3}{8}$ 505 (500-1 $\frac{3}{8}$) | |
|  CIRCLING | | 760-1 490 (500-1) | 820-1 550 (600-1) | 920-1 $\frac{3}{4}$ 650 (700-1 $\frac{3}{4}$) | 1000-2 $\frac{1}{4}$ 730 (800-2 $\frac{1}{4}$) |

