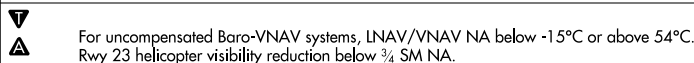


WAAS CH <b>56236</b> <b>W23A</b>	APP CRS <b>234°</b>	Rwy Idg <b>5500</b> TDZE <b>270</b> Apt Elev <b>270</b>
--	------------------------	---

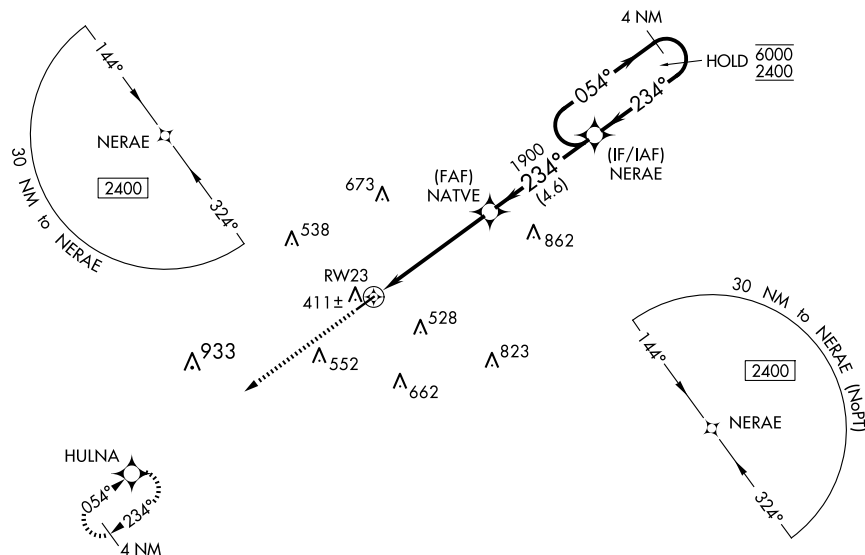
RNAV (GPS) RWY 23  
COLUMBIA/MARION COUNTY (OR)

RNP APCH - GPS.

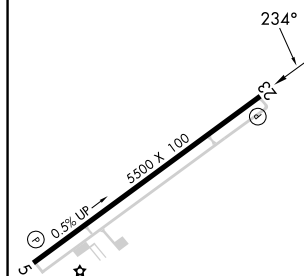


**MISSED APPROACH:**  
Climb to 2400 direct  
HULNA and hold.

AWOS-3PT <b>120.675</b>	HOUSTON CENTER <b>126.8 327.8</b>	UNICOM <b>122.8</b> (CTAF) <b>0</b>
----------------------------	--------------------------------------	--



ELEV 270		TDZE 270
----------	--	----------



2400	HULNA				
CATEGORY		A	B	C	D
LPV DA		588- $\frac{7}{8}$		318 (400- $\frac{7}{8}$ )	
LNAP/ VNAV	DA	761- $\frac{1}{8}$		491 (500- $\frac{1}{8}$ )	
LNAP	MDA	860-1	590 (600-1)	860- $1\frac{3}{4}$	590 (600- $1\frac{3}{4}$ )
<b>C</b> CIRCLING		860-1	590 (600-1)	920- $1\frac{3}{4}$ 650 (700- $1\frac{3}{4}$ )	980- $2\frac{1}{4}$ 710 (800- $2\frac{1}{4}$ )

REIL Rwy 5 and 23 **L**  
MIRL Rwy 5-23 **L**

COLUMBIA, MISSISSIPPI  
Amdt 2A 10AUG23

31°18'N-89°49'W

COLUMBIA/MARION COUNTY (ØRØ)  
RNAV (GPS) RWY 23