

WAAS CH 72802 W26A	APP CRS 259°	Rwy Ldg TDZE 2519 Apt Elev 2558
----------------------------------------	------------------------	-----------------------------------------------------------

RNAV (GPS) RWY 26

MOUNTAIN EMPIRE (MKJ)

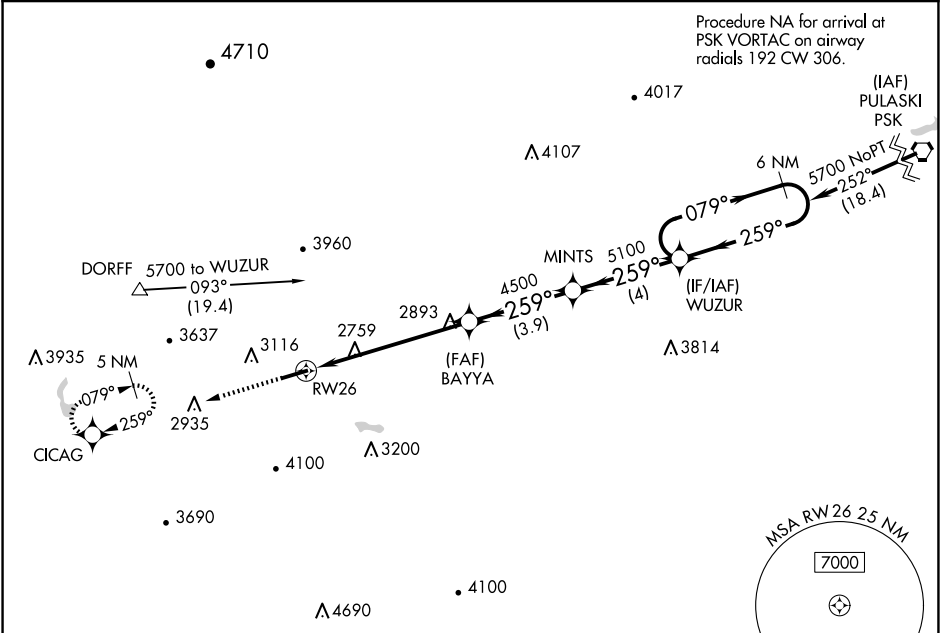
▼

For uncompensated Baro-VNAV systems, LNAV/VNAV NA below -20°C (-4°F) or above 54°C (130°F). Circling NA north of Rwy 8-26. Rwy 26 helicopter visibility reduction below ¾ SM NA. DME/DME RNP-0.3 NA.

MISSED APPROACH:

Climb to 6200 direct CICAG and hold, continue climb-in-hold to 6200.

AWOS-3 123.875	ATLANTA CENTER 127.85 269.3	UNICOM 122.7 (CTAF) 0
--------------------------	---------------------------------------	---------------------------------



ELEV 2558	TDZE 2519
-----------	-----------

6200

CICAG

VGSI and RNAV glidepath not coincident (VGSI Angle 3.75/TCH 47).

6 NM Holding Pattern

*LNAV only.

1.5 NM

4.6 NM

3.9 NM

4 NM

5252 X 75

1.1% UP

259°

70°

REIL Rwys 8 and 26

MIRL Rwy 8-26 0

CATEGORY	A	B	C	D
LPV DA	3096-2	577 (600-2)		NA
LNAV/VNAV DA	3159-2½	640 (700-2½)		NA
LNAV MDA	3140-1	621 (600-1)	3140-1¾ 621 (600-1¾)	NA
CIRCLING	3260-1	702 (800-1)	4440-3 1882 (1900-3)	NA