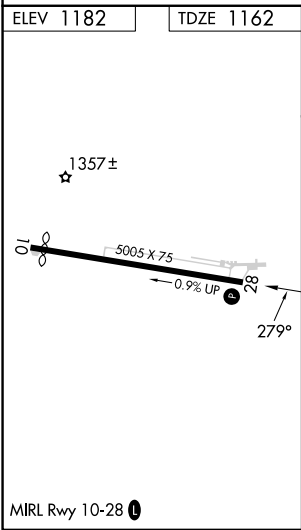
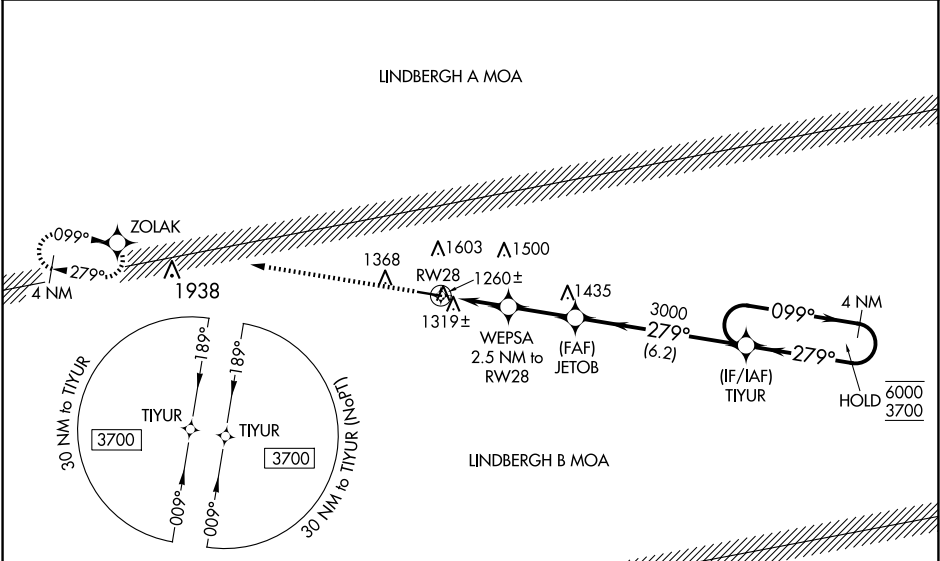


WAAS CH <b>63232</b> <b>W28A</b>	APP CRS <b>279°</b>	Rwy Idg TDZE <b>1162</b> Apt Elev <b>1182</b>	<b>5005</b> <b>1162</b> <b>1182</b>
--	------------------------	---	---

RNAV (GPS) RWY 28

MOUNTAIN VIEW (MNF)

RNP APCH - GPS. ▼ ▲NA Circling Rwy 10 NA at night. Rwy 28 helicopter visibility reduction below 1 SM NA. Use West Plains altimeter setting; when not received, use Fort Leonard Wood altimeter setting and increase all MDA 100 feet; increase LP Cat C/D visibility ¼ SM, LNAV Cat C/D visibility ¼ SM and Circling Cat B/C visibility ¼ SM. Straight-in Rwy 28 at night, Circling Rwy 28 at night, operational VGSI required, remain on or above VGSI glidepath until threshold.		MISSED APPROACH: Climb to 3700 direct ZOLAK and hold.
UNO ASOS <b>123.825</b>	KANSAS CITY CENTER <b>128.35 284.675</b>	UNICOM <b>122.8 (CTAF) 0</b>



3700 ZOLAK		TIYUR	
WEPSA 2.5 NM to RW28		JETOB	
RW28		4 NM Holding Pattern	
3.50° TCH 54		099° → 6000	
2100		← 279° 3700	
2.5 NM		2.4 NM	
6.2 NM			
CATEGORY	A	B	C
LP MDA	1560-1	398 (400-1)	1560-1½ 398 (400-1½)
LNAV MDA	1620-1	458 (500-1)	1620-1¾ 458 (500-1¾)
CIRCLING	1880-1	2080-1¼	2080-2¾ 2180-3
	698 (700-1)	898 (900-1¼)	898 (900-2¾) 998 (1000-3)