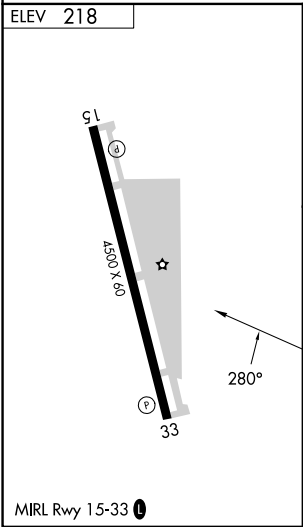
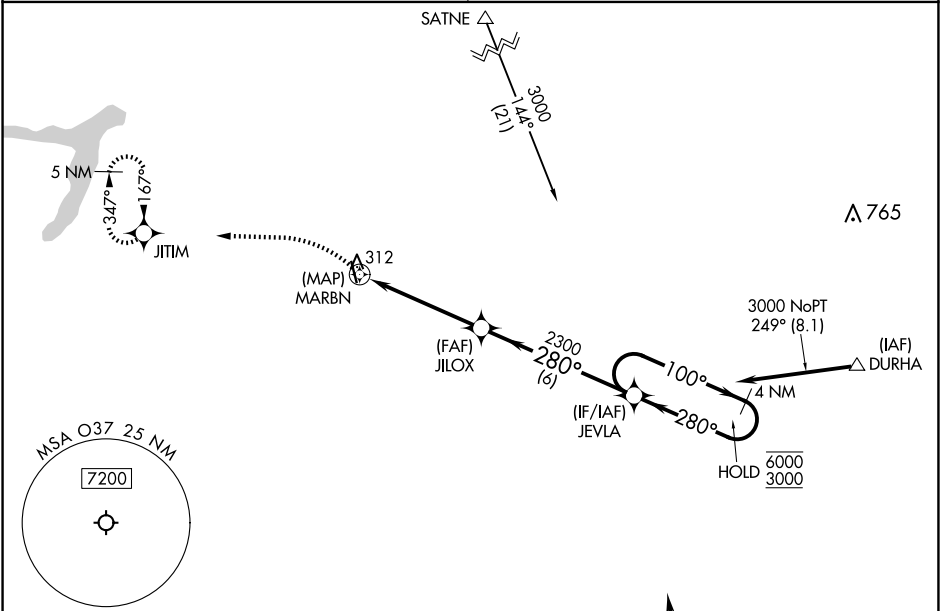


APP CRS	Rwy Ldg	N/A
280°	TDZE	N/A
	Apt Elev	218

RNAV (GPS)-A  
HAIGH FLD (O37)

RNP APCH. ▼ Use Chico altimeter setting; when not received, use Redding altimeter setting and increase all MDA 120 feet. Increase visibility Cat C and D ¼ SM. ▲ NA	MISSED APPROACH: Climbing left turn to 4800 direct JITIM and hold, continue climb-in-hold to 4800.
OAKLAND CENTER 132.2 350.3	UNICOM 122.7 (CTAF) 1



Procedure NA for arrivals at TALUM on V23-195 southeast bound.

