

WAAS
CH **86638**
W24A

APP CRS
235°

Rwy Idg
TDZE **86**
Apt Elev **99**

RNAV (GPS) RWY 24
COLUMBUS COUNTY RGNL (CPC)

RNP APCH

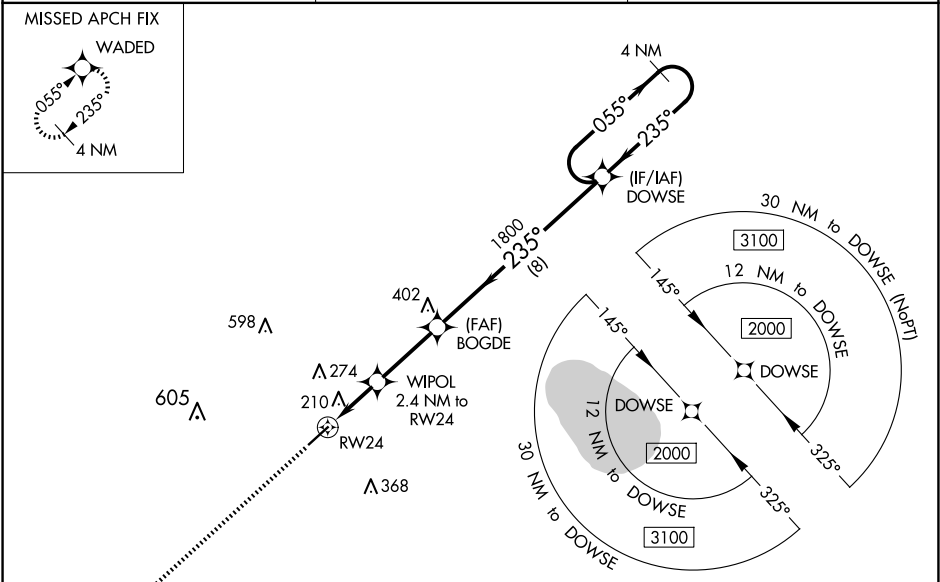
▼

▲

For uncompensated Baro-VNAV systems, LNAV/VNAV NA below -15°C (5°F) or above 54°C (130°F). Baro-VNAV and VDP NA when using Elizabethtown altimeter setting. Helicopter visibility reduction below ¾ SM NA. When local altimeter setting not received, use Elizabethtown altimeter setting and increase LPV DA to 427 feet, LNAV/VNAV DA to 441 feet and all visibilities ¼ mile. Increase all MDA 60 feet and all Cat C and D visibilities ¼ mile.

MISSED APPROACH:
Climb to 2000 direct
WADED and hold.

AWOS-3 118.375	MYRTLE BEACH APP CON ★ 119.2 350.3	UNICOM 122.8 (CTAF) 0
--------------------------	--	---------------------------------



ELEV 99

TDZE 86

2000

WADED

VGSI and RNAV glidepath not coincident (VGSI Angle 3.25/TCH 42).

*LNAV only.

WIPOL 2.4 NM to RW24

BOGDE 1800

DOWSE

4 NM Holding Pattern

055°

235°

2000

1800

*860

GP 3.00° TCH 40

1 NM

1.4

2.9 NM

8 NM

CATEGORY	A	B	C	D
LPV DA		374-1	288 (300-1)	
LNAV/VNAV DA		388-1½	302 (300-1½)	
LNAV MDA		460-1	374 (400-1)	
CIRCLING	520-1 421 (500-1)	580-1 481 (500-1)	680-1½ 581 (600-1½)	780-2¼ 681 (700-2¼)

REIL Rwy 6 and 24 0

MIRL Rwy 6-24 0