

WAAS CH 78131 W16A	APP CRS 164°	Rwy Idg TDZE 1206 Apt Elev 1206
--	------------------------	---

RNAV (GPS) RWY 16

AITKIN MUNI/STEVE KURTZ FLD (AIT)

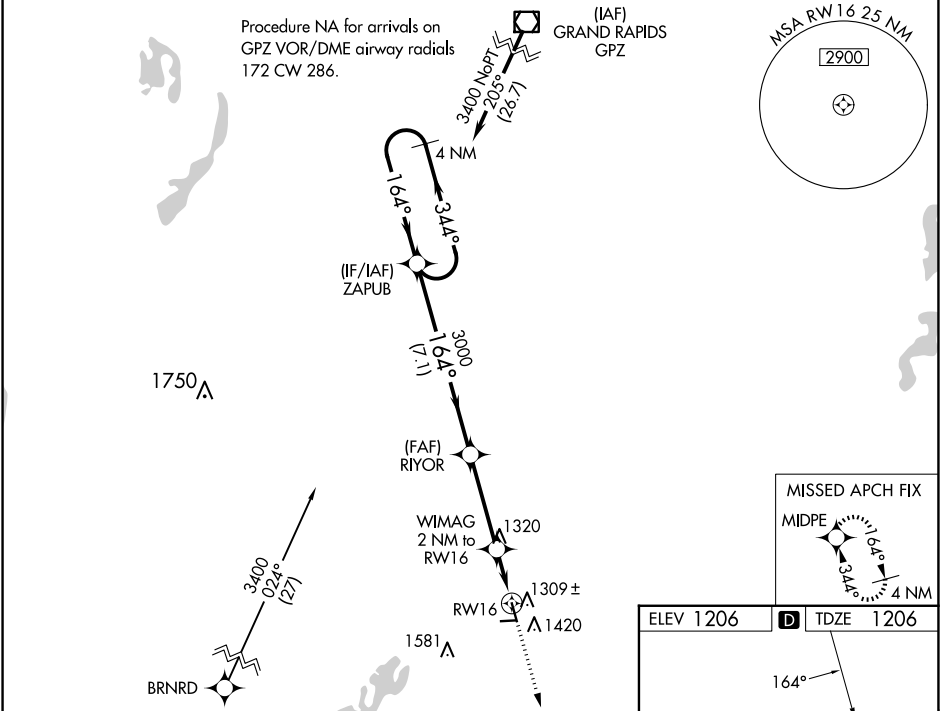
⚠

For uncompensated Baro-VNAV systems, LNAV/VNAV NA below -17°C (2°F) or above 54°C (130°F).
Baro-VNAV and VDP NA when using Mc Gregor altimeter setting. DME/DME RNP-0.3 NA. When local altimeter setting not received; use Mc Gregor altimeter setting and increase all DA and MDA 40 feet; increase LPV all Cats visibilities ¼ SM, LNAV/VNAV all Cats and LNAV Cat C visibilities ⅓ SM. Circling NA to Rwys 8 and 26. Rwy 16 helicopter visibility reduction below ⅓ SM NA.

MISSED APPROACH:

Climb to 3400 direct MIDPE and hold.

AWOS-3 118.675	MINNEAPOLIS CENTER 118.05 239.0	UNICOM 123.05 (CTAF) 0
--------------------------	---	----------------------------------



4 NM Holding Pattern ZAPUB		VGSI and RNAV glidepath not coincident (VGSI Angle 3.00/TCH 32).		3400	MIDPE
3400 ← 344° 164° →		164°		3000	*LNAV only
GP 3.00° TCH 40		3000		*1 NM to RW16	RW16
7.1 NM		3.5 NM		1 NM	1 NM
CATEGORY	A	B	C	D	
LPV DA	1518-1	312 (400-1)		NA	
LNAV/VNAV DA	1607-1⅓	401 (500-1⅓)		NA	
LNAV MDA	1560-1	354 (400-1)		NA	
CIRCLING	1780-1 574 (600-1)	1900-2 694 (700-2)		NA	

