

APP CRS
323°

Rwy Ldg
TDZE
Apt Elev
N/A
N/A
6882

RNAV (GPS)-E

STEAMBOAT SPRINGS/BOB ADAMS FLD (SBS)

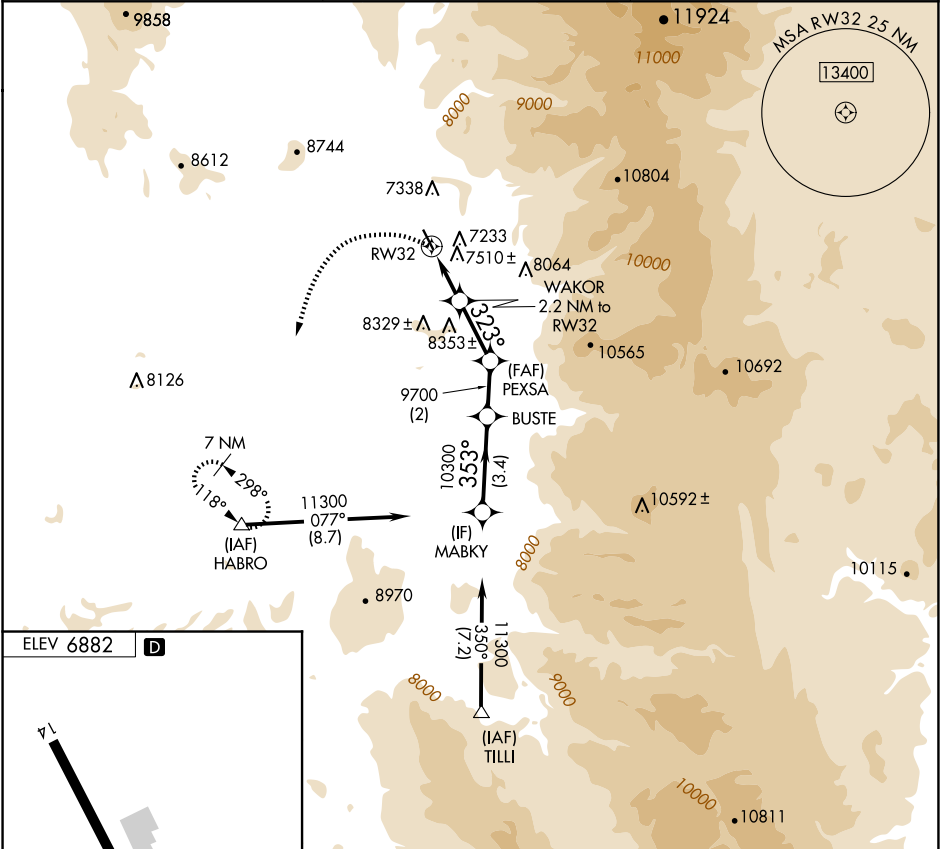
NA

-25°C

Circling NA northeast of Rwy 14-32.
DME/DME RNP- 0.3 NA.
When local altimeter setting not received, use Yampa Valley altimeter setting and increase all MDA 80 feet.

MISSED APPROACH: Climbing left turn to 11300 direct HABRO and hold, continue climb-in-hold to 11300.

AWOS-3 118.325	DENVER CENTER 120.475 235.975	UNICOM 122.8 (CTAF) 0
-------------------	----------------------------------	--------------------------



11300 HABRO		VGS1 and descent angles not coincident (VGS1 Angle 4.00/TCH 40).		MABKY	
WAKOR 2.2 NM to RW32		PEXSA		BUSTE	
RW32		323°		353°	
8740		9700		10300	
2.2 NM		2.4 NM		2 NM	
3.4 NM		Procedure Turn NA		11300	
CATEGORY	A	B	C	D	
CIRCLING	8140-1¼ 1258 (1300-1¼)	8140-1½ 1258 (1300-1½)	NA		