

## VAAIL ONE ARRIVAL (RNAV)

AL-6403 (FAA)

EAGLE COUNTY RGNL (EGE)  
EAGLE, COLORADO

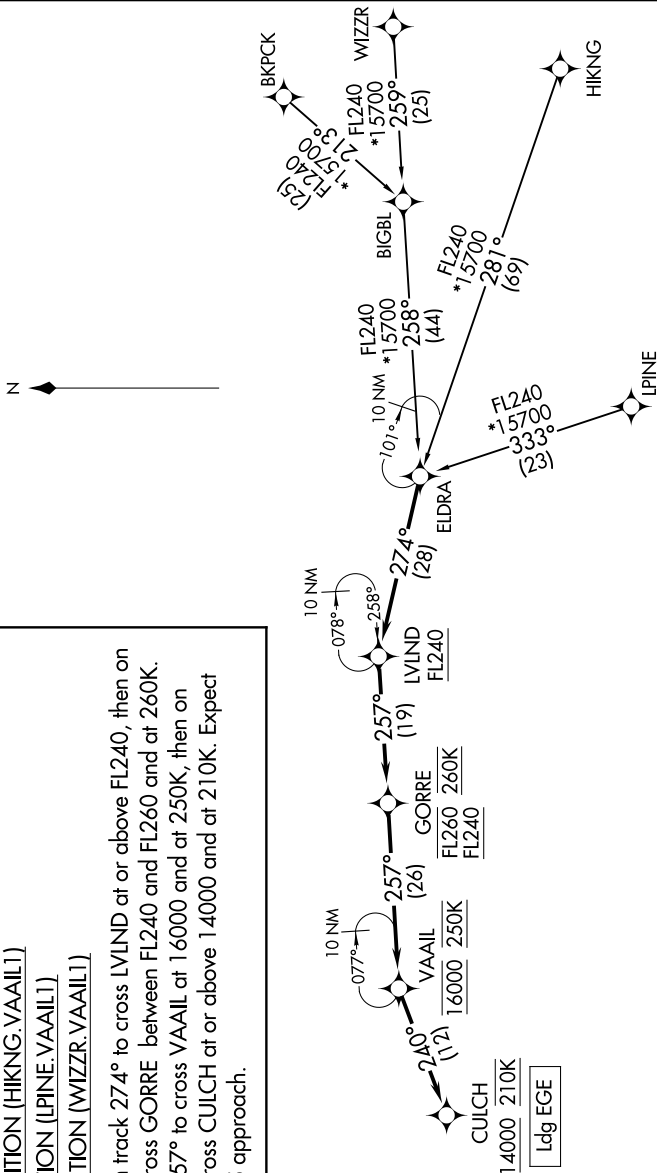
DENVER CENTER  
128.65 282.2  
ATIS  
135.575

RNAV 1 - DME/DME/IRU or GPS.  
RADAR required for non-GPS equipped aircraft.

## ARRIVAL ROUTE DESCRIPTION

- BIGBL TRANSITION (BIGBL.VAAIL1)  
BKPKCK TRANSITION (BKPKCK.VAAIL1)  
HIKING TRANSITION (HIKING.VAAIL1)  
LPINE TRANSITION (LPINE.VAAIL1)  
WIZZR TRANSITION (WIZZR.VAAIL1)

From ELDRA on track 274° to cross LVIND at or above FL240, then on track 257° to cross GORRE between FL240 and FL260 and at 260K. Then on track 257° to cross VAAIL at 16000 and at 250K, then on track 240° to cross CULCH at or above 14000 and at 210K. Expect RNAV RWY 25 approach.



NOTE: Chart not to scale.

VAAIL ONE ARRIVAL (RNAV)  
(ELDRA.VAAIL1) 17APR25

EAGLE, COLORADO  
EAGLE COUNTY RGNL (EGFE)