

WAAS CH <b>75965</b> <b>W25B</b>	APP CRS <b>253°</b>	Rwy Ldg TDZE <b>8000</b> Apt Elev <b>6540</b> <b>6547</b>
--	------------------------	--

# RNAV (GPS) Y RWY 25

EAGLE COUNTY RGNL (EGE)

RNP APCH-GPS.

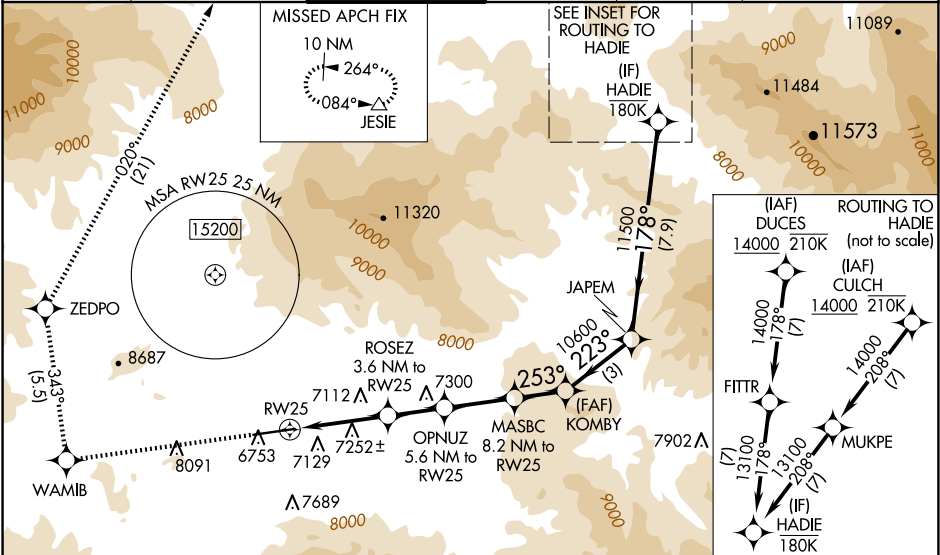
**⚠** When local altimeter setting not received, procedure NA. Rwy 25 helicopter visibility reduction below ¾ SM NA. Circling NA south of Rwy 25-7. Circling Rwy 7 NA at night. Inop table does not apply to LP and LNAV Cat C. For inop ALS, increase LP (\*) Cat A visibility to 1 SM and Cat C visibility to 2½ SM.

MALS R

**AS**

MISSED APPROACH: (Do not exceed 165K until ZEDPO) Climb to 15000 on the RNAV missed approach route to JESIE and hold, continue climb in-hold to 15000.  
\*Missed approach requires minimum climb of 318 feet per NM to 8700.  
#Missed approach requires minimum climb of 288 feet per NM to 8900.

ATIS <b>135.575</b>	DENVER CENTER <b>128.65 282.2</b>	EAGLE TOWER ★ <b>119.8 (CTAF) 0</b>	GND CON <b>121.8</b>	CLNC DEL <b>124.75</b>	DENVER CLNC DEL <b>124.75</b> (When lower closed)
------------------------	--------------------------------------	--	-------------------------	---------------------------	---



ELEV 6547			D	TDZE 6540		15000		↑	WAMIB	tr 343°	ZEDPO	tr 020°	JESIE	VGSI and descent angles not coincident (VGSI Angle 3.00/TCH 55).	

SW-1, 10 JUL 2025 to 07 AUG 2025

SW-1, 10 JUL 2025 to 07 AUG 2025