

APP CRS 251°	Rwy Ldg TDZE Apt Elev	N/A N/A 6547
------------------------	-----------------------------	---

RNAV (GPS)-D EAGLE COUNTY RGNL (EGE)

RNP APCH.			<div>MISSED APPROACH: (Do not exceed 185K until GRODY) Climb to 14600 direct ZODSY then on track 338° to GRODY and on track 025° to JESIE and hold, continue climb in-hold to 14600.</div>		
<div><div><div>V</div><div>A</div><div>S</div></div><div><div>Circling for Rwy 7 NA at night. Circling NA for Cats C and D south of Rwy 7-25. Rwy 7 helicopter visibility reduction below 1 SM NA. Rwy 25 helicopter visibility reduction below ¾ SM NA. Inoperative table does not apply.</div><div>-19°C</div></div></div>					
ATIS 135.575	DENVER CENTER 128.65 282.2	EAGLE TOWER ★ 119.8 (CTAF) 0	GND CON 121.8	CLNC DEL 124.75	DENVER CLNC DEL 124.75 (When tower closed)

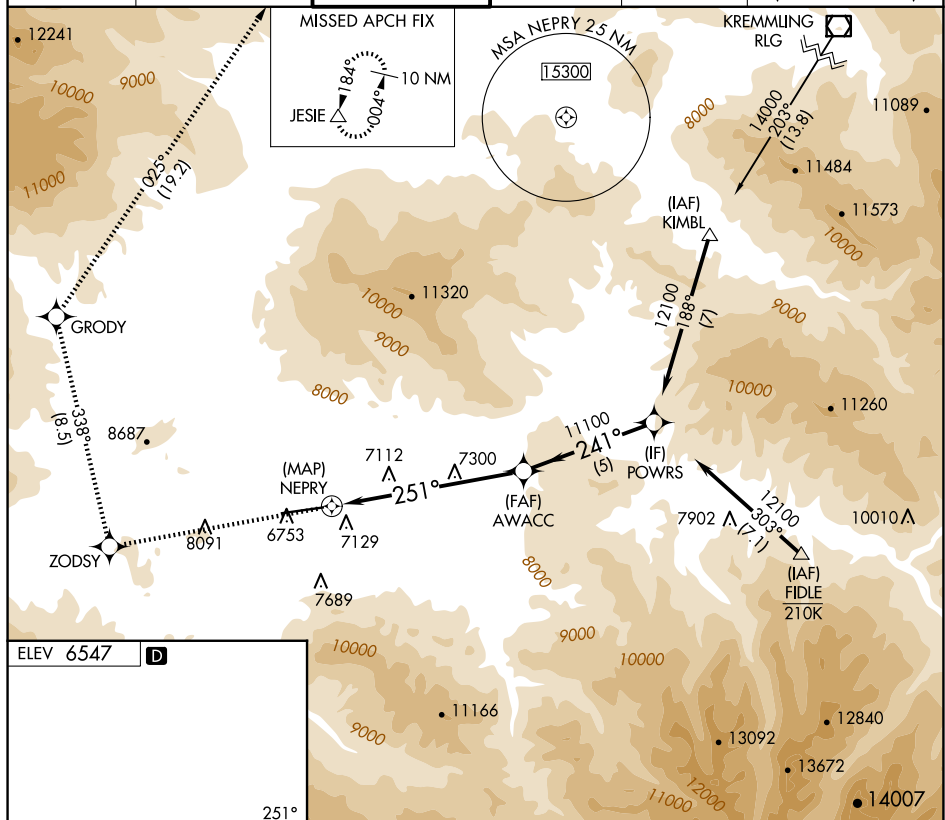


Figure 1 illustrates a 3D profile view of a flight path. The path is defined by a series of points and segments. The vertical axis is labeled 'Z' and the horizontal axis is labeled 'X'. The path starts at a point labeled 'TWR 6552' and ends at a point labeled 'POWRS'. The path is divided into segments with different slopes: 0.9% UP, 9000 X 150, and 1.0% DOWN. The path is also labeled with 'ZODSY', 'GRODY', 'JESIE', 'AWACC', and 'NEPRY'. The path is shown in a 3D coordinate system with axes 'Z' and 'X'.

SW-1, 10 JUL 2025 to 07 AUG 2025