

LOC/DME I-ESJ 109.75 Chan 34(Y)	APP CRS 250°	Rwy Ldg TDZE Apt Elev 8000 6540 6547
---	------------------------	--

LDA RWY 25
EAGLE COUNTY RGNL (EGE)

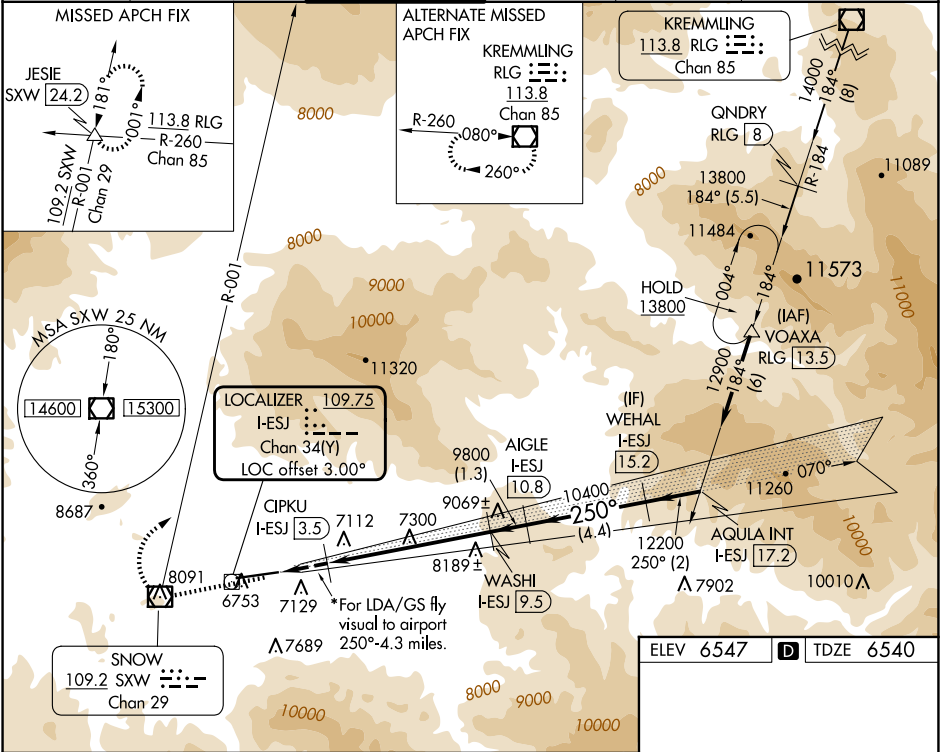
DME required.

▼ Inoperative table does not apply.
▲ At night increase LDA/GS visibility to 5 SM.
☞ -19°C
Fly visual to airport authorized during day only.

MALSR

MISSED APPROACH: Climb direct SXW VOR/DME, cross SXW VOR/DME, then climbing right turn to 14600 on SXW VOR/DME R-001 to JESIE SXW 24.2 DME and hold, continue climb-in-hold to 14600. *Missed approach requires minimum climb of 275 feet per NM to 11700.

ATIS 135.575	DENVER CENTER 128.65 282.2	EAGLE TOWER ★ 119.8 (CTAF) 0	GND CON 121.8	CLNC DEL 124.75	DENVER CLNC DEL 124.75 (When tower closed)
------------------------	--------------------------------------	--	-------------------------	---------------------------	---



SXW 14600 JESIE

*For LDA/GS fly visual to airport 250°-4.3 miles.

VGSI and LDA glidepath not coincident (VGSI Angle 3.00/TCH 55).

AQUA INT I-ESJ 17.2

WASHI I-ESJ 9.5

AIGLE I-ESJ 10.8

WEHAL I-ESJ 15.2

GS 3.80° TCH 55

1.9 NM 6 NM 1.3 NM 4.4 NM 2 NM

CATEGORY	A	B	C	D
S-LDA/GS 25*	8330-3	1790 (1800-3)		NA
S-LDA 25	8620-2½	2080 (2100-2½)	8620-3 2080 (2100-3)	NA

HIRL Rwy 7-25 0

REIL Rwy 7 0

SW-1, 10 JUL 2025 to 07 AUG 2025

SW-1, 10 JUL 2025 to 07 AUG 2025