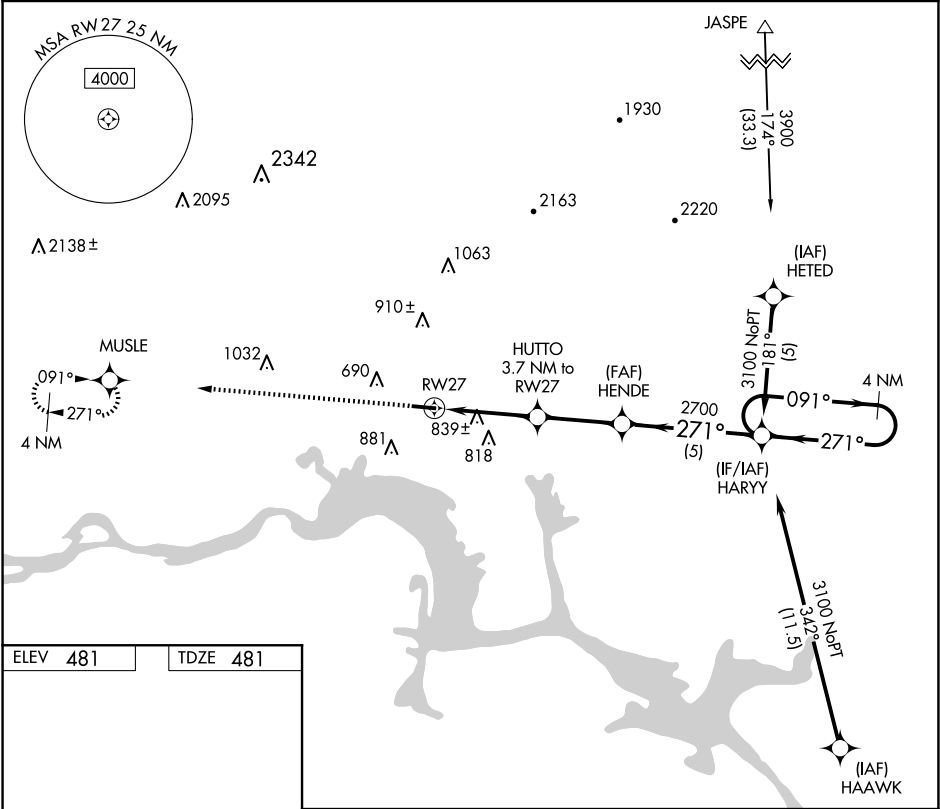


APP CRS	Rwy Idg	4504
271°	TDZE	481
	Apt Elev	481

RNAV (GPS) RWY 27
CLARKSVILLE MUNI (H35)

<p>▼</p> <p>NA</p>	<p>Use Russellville Rgnl altimeter setting; if not received, use Fort Smith Rgnl altimeter setting and increase all MDAs 60 feet. DME/DME RNP-0.3 NA. Procedure NA at night. Rwy 27 helicopter visibility reduction below 1 SM NA.</p>	<p>MISSED APPROACH: Climb to 3400 direct MUSLE WP and hold.</p>
--------------------	--	---

MEMPHIS CENTER 128.475 377.15	UNICOM 122.8 (CTAF)
---	-------------------------------



4504 X 75

0.7% UP

271°

27

3400

MUSLE

HUTTO
3.7 NM to RW27

HENDE
2700

HARRY
4 NM Holding Pattern

091° →

← 271°

3100

1720

3.7 NM

3 NM

5 NM

RW27

Visual Segment - Obstacles.

CATEGORY	A	B	C	D
LNAV MDA	1160-1 679 (700-1)		NA	
CIRCLING	1220-1 739 (800-1)	1240-1¼ 759 (800-1¼)	NA	

MIRL Rwy 9-27

SC-1, 10 JUL 2025 to 07 AUG 2025

SC-1, 10 JUL 2025 to 07 AUG 2025