

SC-5, 10 JUL 2025 to 07 AUG 2025

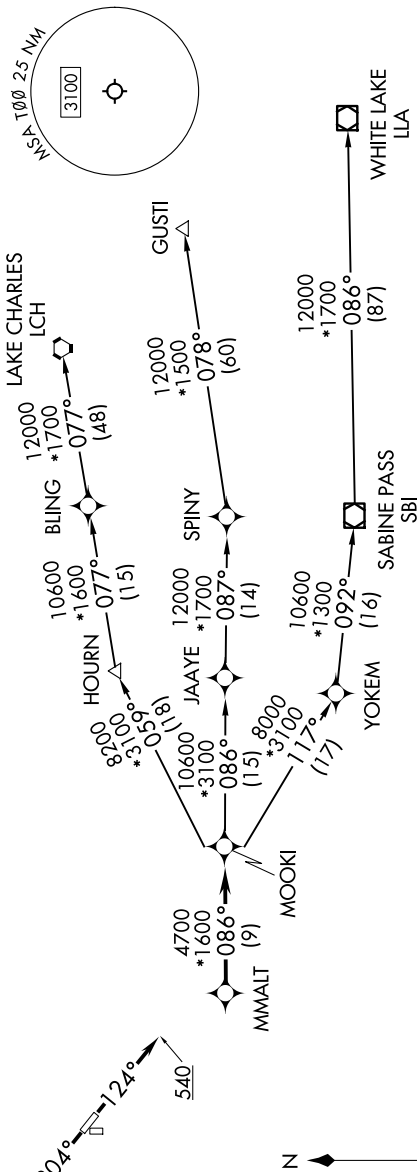
HOUSTON DEP CON
134.45 284.0
CTAF
122.9

RNAV 1 - DME/DME/IRU or GPS.
RADAR required.

(MMALT7.MMALT) 23334
MMALT SEVEN DEPARTURE (RNAV)

AL-6395 (FAA)

CHAMBERS COUNTY (T000)
ANAHUAC, TEXAS



NOTE: GUSTI and LCH Transitions ATC assigned only for aircraft departing AXH, EFD, GLS, HPY, IWS, LBX, LVJ, SGR, TME, T00, T41 and 54T.

DEPARTURE ROUTE DESCRIPTION

TAKEOFF RUNWAY 12: Climb on heading 124° to 540, for RADAR vectors to MMALT, thence . . .
TAKEOFF RUNWAY 30: Climb on heading 304° to 540, for RADAR vectors to MMALT, thence . . .
. . . on track 086° to MOOKI, then on (transition). Maintain ATC assigned altitude.
Expect filed altitude 10 minutes after departure.

GUSTI TRANSITION (MMALT7.GUSTI)
LAKE CHARLES TRANSITION (MMALT7.LCH)
WHITE LAKE TRANSITION (MMALT7.LLA)

TAKEOFF MINIMUMS
Rwys 17, 35: NA-Environmental.
Rwys 12, 30: Standard with minimum
climb of 500' /NM to 540.

NOTE: Chart not to scale.

MMALT SEVEN DEPARTURE (RNAV)
(MMALT7.MMALT) 30NOV23

ANAHUAC, TEXAS
CHAMBERS COUNTY (T000)

SC-5, 10 JUL 2025 to 07 AUG 2025