

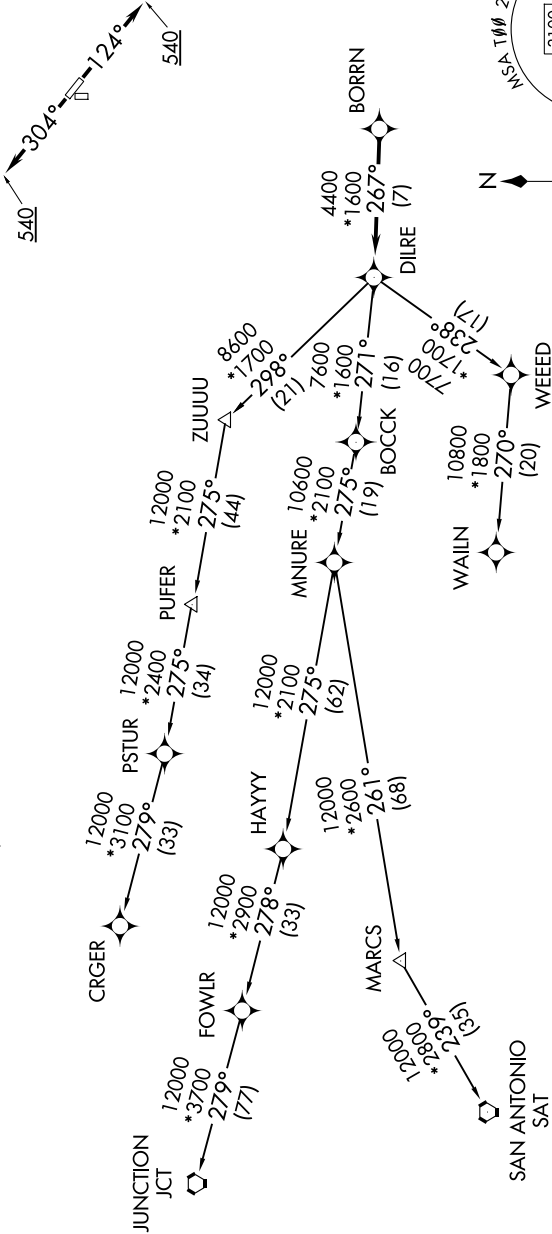
SC-5, 10 JUL 2025 to 07 AUG 2025

TOP ALTITUDE:
ASSIGNED BY ATC

RNAV 1 - DME/DME/IRU or GPS.
RADAR required.

CTAF
122.9
HOUSTON DEP CON
134.45 284.0

TAKEOFF MINIMUMS
Rwys 17, 35: NA - Environmental.
Rwys 12, 30: Standard with minimum
climb of 500'/NM to 540.



NOTE: CRGR-TRANSITION ATC assigned only
for aircraft departing 54T, AXH, EFD, GLS,
HPY, IWS, LBX, LVJ, SGR, TME, T000, T41.

(CONTINUED ON FOLLOWING PAGE)

SC-5, 10 JUL 2025 to 07 AUG 2025