

WAAS CH 58312 W25A	APP CRS 251°	Rwy Idg TDZE Apt Elev	5008 5 5
--	------------------------	-----------------------------	-------------------------------------

RNAV (GPS) RWY 25

THE FLORIDA KEYS MARATHON INTL (MTH)

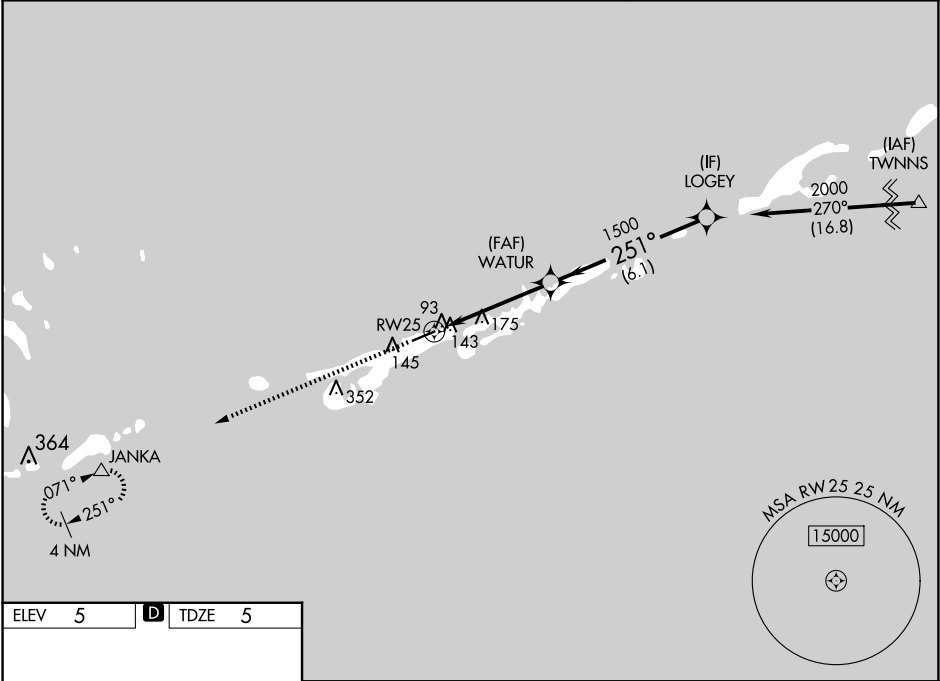
▼

▲

DME/DME RNP-0.3 NA. Helicopter visibility reduction below ¾ SM NA. When local altimeter setting not received, use Key West Intl altimeter setting: increase LPV DA to 408 feet, LNAV/VNAV DA to 497 feet and all MDAs 100 feet; increase LPV all Cats visibility ½ SM, increase LNAV/VNAV all Cats, LNAV Cat C/D, and Circling Cat C visibility ¼ SM, and Circling Cat D visibility ½ SM. Baro-VNAV NA below -15°C (5°F) and above 48°C (118°F). Baro-VNAV NA when using Key West Intl altimeter setting.

MISSED APPROACH:
Climb to 3100 direct JANKA and hold.

ASOS 135.525	MIAMI CENTER 133.5 306.9	UNICOM 122.975 (CTAF) 0
------------------------	------------------------------------	-----------------------------------



ELEV 5 D TDZE 5

251° to RW25

5008 x 100

62

REIL Rwy 7 0
MIRL Rwy 7-25 0

3100	JANKA	VGSI and RNAV glidepath not coincident (VGSI Angle 3.00°/TCH 24).		Procedure Turn NA
↑	△			
		WATUR	LOGEY	2000
		RW25	251°	GP 3.00° TCH 40
		4.5 NM	6.1 NM	
CATEGORY	A	B	C	D
LPV DA	315-1 310 (400-1)			
LNAV/VNAV DA	404-1½ 399 (400-1½)			
LNAV MDA	440-1	435 (500-1)	440-1¼ 435 (500-1¼)	440-1½ 435 (500-1½)
CIRCLING	460-1 455 (500-1)	480-1 475 (500-1)	620-1¾ 615 (700-1¾)	660-2 655 (700-2)