

WAAS CH 90331 W23A	APP CRS 229°	Rwy Idg TDZE 166 Apt Elev 166	5000 166 166
--	------------------------	---	---

RNAV (GPS) RWY 23

MOUNT OLIVE MUNI (W40)

RNP APCH - GPS.

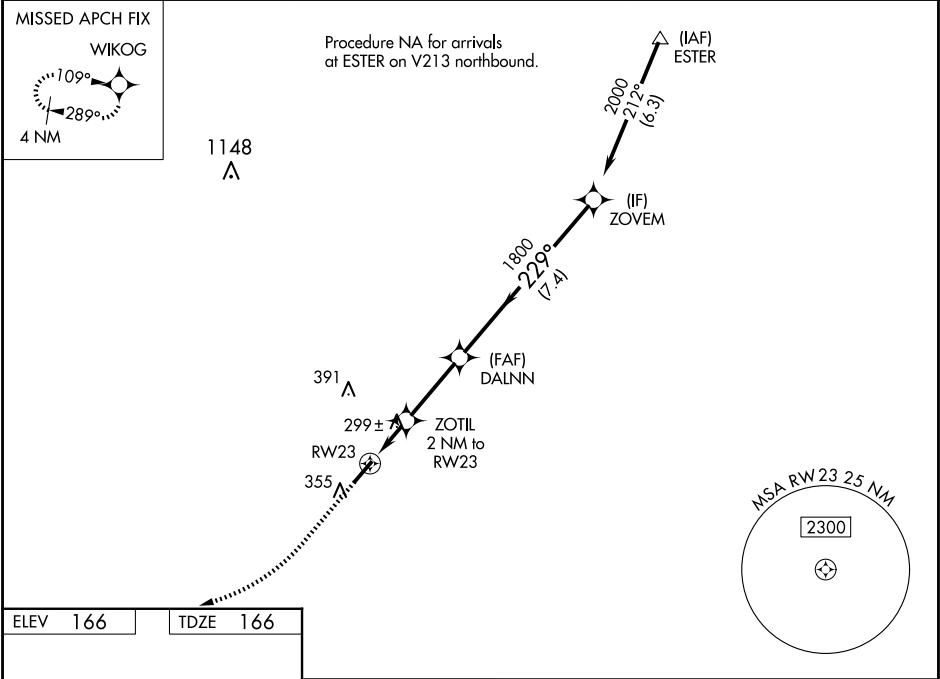
▼

▲

Rwy 23 helicopter visibility reduction below ¾ SM NA.
When local altimeter setting not received, use Goldsboro altimeter setting.

MISSED APPROACH: Climb to 700 then climbing right turn to 2000 direct WIKOG and hold.

AWOS-3P 120.075	SEYMOUR JOHNSON APP CON* 119.7 273.6	UNICOM 122.8 (CTAF) 0
---------------------------	--	---------------------------------



391

▲

299 ± 7

ZOTIL

2 NM to RW23

355

RW23

(FAF) DALNN

MSA RW23 25 NM

2300

ELEV 166

TDZE 166

229°

700

2000

WIKOG

VGSI and RNAV glidepath not coincident (VGSI Angle 3.50/TCH 43).

229°

2000

1800

1800

840

2 NM

3 NM

7.4 NM

DALNN

ZOTIL 2 NM to RW23

RW23

ZOVM

GP 3.00° TCH 53

51

5254.175

MIRL Rwy 5-23 0

CATEGORY	A	B	C	D
LPV DA	452-1	286 (300-1)		NA
LNAV MDA	580-1	414 (500-1)	580-1½ 414 (500-1½)	NA
CIRCLING	700-1	534 (600-1)	720-1½ 554 (600-1½)	NA

SE-2, 10 JUL 2025 to 07 AUG 2025

SE-2, 10 JUL 2025 to 07 AUG 2025