

WAAS CH 63035 W19A	APP CRS 189°	Rwy Idg TDZE 497 Apt Elev 499	5007 497 499
--	------------------------	---	---

RNAV (GPS) RWY 19

WILLIAM L WHITEHURST FLD (M08)

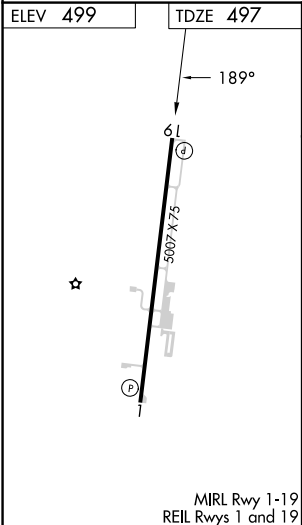
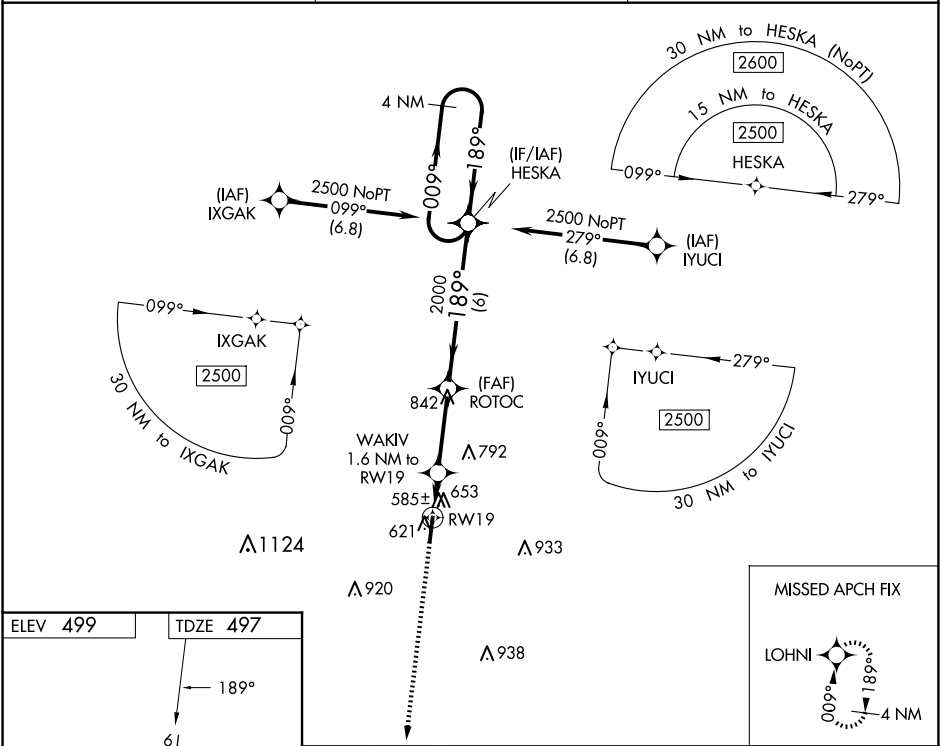
▼

⚠ NA

DME/DME RNP-0.3 NA. When local altimeter setting not received, use Jackson altimeter setting and increase all MDA 80 feet, increase LP Cats C/D visibilities ¼ mile, increase LNAV Cats C/D visibilities ⅓ mile and Circling Cats C/D visibilities ½ mile. Rwy 19 helicopter visibility reduction below ¾ SM NA. Rwy 1 helicopter visibility reduction below 1 SM NA.

MISSED APPROACH: Climb to 2500 direct LOHNI and hold.

AWOS-3 121.125	MEMPHIS CENTER 124.35 318.1	UNICOM 123.0 (CTAF)
--------------------------	---------------------------------------	-------------------------------



2500	LOHNI	Visual Segment - Obstacles.	HESKA	4 NM Holding Pattern
WAKIV 1.6 NM to RW19	ROTOC	189°	009°	2500
1020	2000	189°	189°	
1.6 NM	3 NM	6 NM		
CATEGORY	A	B	C	D
LP MDA	840-1 343 (400-1)			
LNAV MDA	920-1	423 (500-1)	920-1¼	423 (500-1¼)
CIRCLING	980-1	481 (500-1)	1100-1¾ 601 (700-1¾)	1360-2¾ 861 (900-2¾)