

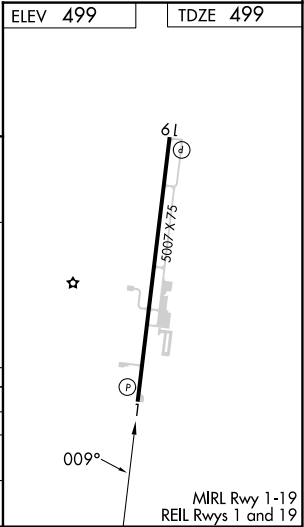
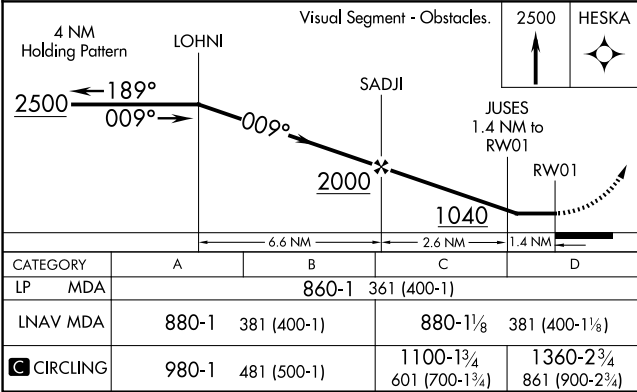
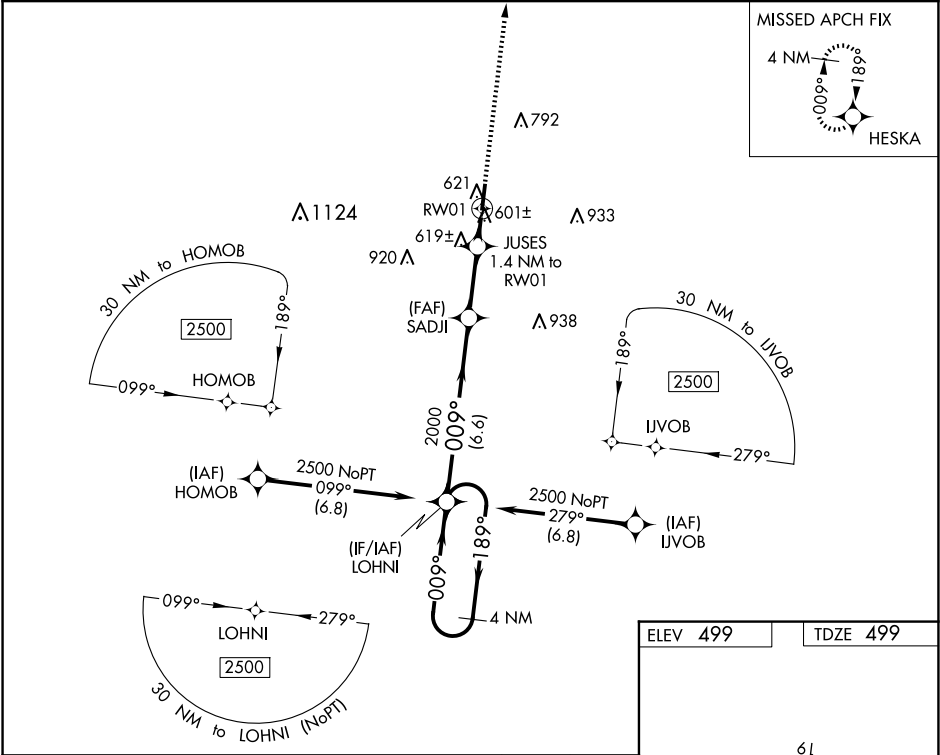
WAAS CH 86935 W01A	APP CRS 009°	Rwy Idg TDZE 499 Apt Elev 499	5007
--	------------------------	---	-------------

RNAV (GPS) RWY 1
WILLIAM L WHITEHURST FLD (M08)

⚠ DME/DME RNP-0.3 NA. When local altimeter setting not received, use Jackson altimeter setting and increase all MDA 80 feet, increase LP Cats C/D visibilities $\frac{3}{8}$ mile, and LNAV Cats C/D and Circling Cats C/D visibilities $\frac{1}{4}$ mile. Rwy 1 helicopter visibility reduction below 1 SM NA.

MISSED APPROACH: Climb to 2500 direct HESKA and hold.

AWOS-3 121.125	MEMPHIS CENTER 124.35 318.1	UNICOM 123.0 (CTAF)
--------------------------	---------------------------------------	-------------------------------



SE-1, 10 JUL 2025 to 07 AUG 2025

SE-1, 10 JUL 2025 to 07 AUG 2025