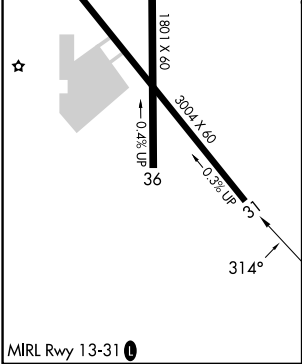
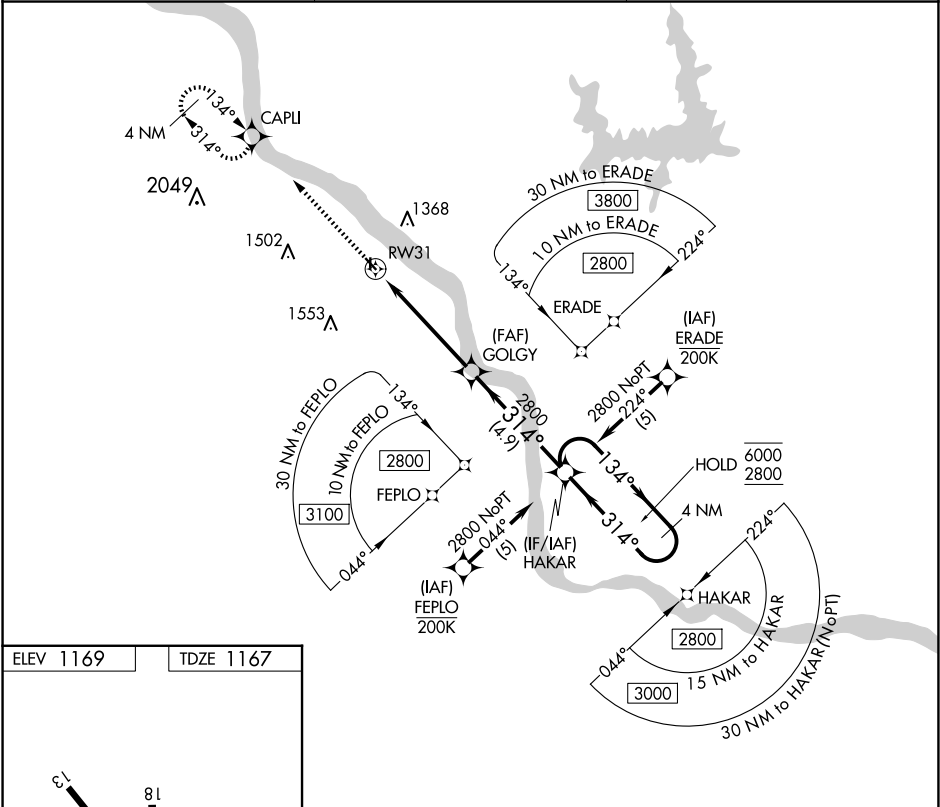


APP CRS	Rwy ldg	3004
314°	TDZE	1167
	Apt Elev	1169

RNAV (GPS) RWY 31
DAVID JAY PERRY (1K4)

RNP APCH - GPS.	MISSED APPROACH: Climb to 3100 direct CAPLI and hold, continue climb-in-hold to 3100.
▼ Rwy 31 helicopter visibility reduction below 1 SM NA. ▲ NA Procedure NA at night. Use OKC altimeter setting.	

OKC ASOS 125.85	OKE CITY APP CON 120.45 288.325	UNICOM 122.7 (CTAF) 0
--------------------	------------------------------------	--------------------------



<div>3100 ↑</div> <div>CAPLI </div>		<div>GOLGY</div> <div>HAKAR</div> <div>4 NM Holding Pattern</div>		
<div>RW31</div> <div></div>				
CATEGORY	A	B	C	D
LNAV MDA	1680-1	513 (600-1)	1680-1 ³ / ₈ 513 (600-1 ³ / ₈)	NA
CIRCLING	1700-1 531 (600-1)	1840-1 671 (700-1)	1920-2 ¹ / ₄ 751 (800-2 ¹ / ₄)	NA

SC-1, 10 JUL 2025 to 07 AUG 2025

SC-1, 10 JUL 2025 to 07 AUG 2025