

WAAS CH 93530 W04A	APP CRS 040°	Rwy Idg TDZE 1168 Apt Elev 1171
--	------------------------	---

RNAV (GPS) RWY 4
IOWA COUNTY (MRJ)

RNP APCH - GPS.

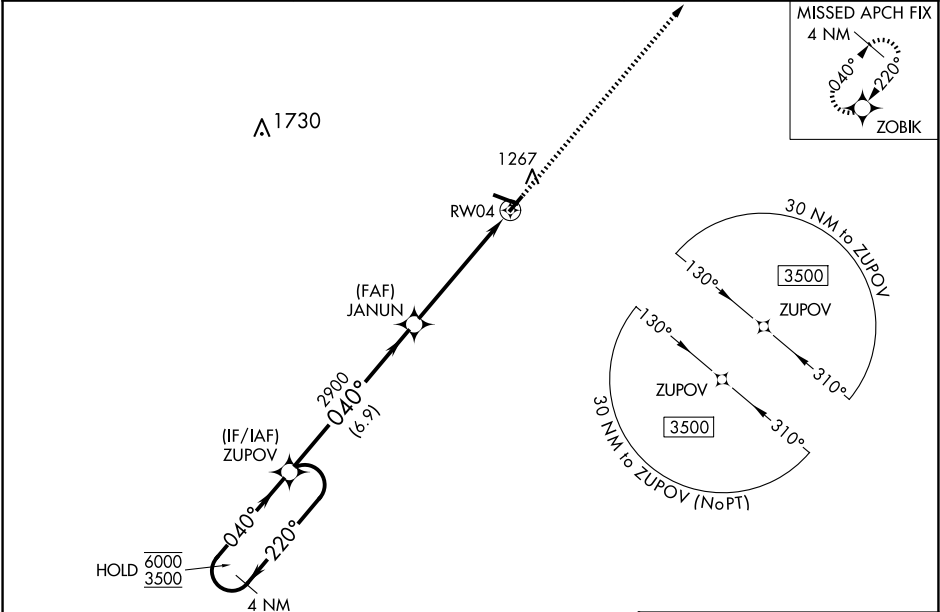
▼

▲

Baro-VNAV and VDP NA when using Platteville altimeter setting. For uncompensated Baro-VNAV systems, LNAV/VNAV NA below -17°C or above 54°C. When local altimeter setting not received, use Platteville altimeter setting and increase LPV DA to 1473 feet, increase LNAV/VNAV DA to 1498 feet, increase all MDAs 60 feet, and LNAV visibility Cat C ¼ SM.

MISSED APPROACH:
Climb to 3600 direct ZOBIK and hold.

AWOS-3 118.525	CHICAGO CENTER 133.95 281.4	UNICOM 122.8 (CTAF) 0
--------------------------	---------------------------------------	---------------------------------



4 NM Holding Pattern

VGSI and RNAV glidepath not coincident (VGSI Angle 3.00/TCH 31).

3600 ZOBIK

GP 3.00° TCH 40

6.9 NM

4.1 NM

1.2 NM to RWY 04

CATEGORY	A	B	C	D
LPV DA	1418-1	250 (300-1)		NA
LNAV/VNAV DA	1443-1	275 (300-1)		NA
LNAV MDA	1580-1	412 (500-1)	1580-1½ 412 (500-1½)	NA
CIRCLING	1620-1 449 (500-1)	1640-1 469 (500-1)	1640-1½ 469 (500-1½)	NA

ELEV 1171

TDZE 1168

5001 X 75

3600 X 60

0.7% UP

040°

MIRL Rwy 4-22 and 11-29 0

EC-3, 10 JUL 2025 to 07 AUG 2025

EC-3, 10 JUL 2025 to 07 AUG 2025