

WAAS CH <b>82330</b> <b>W29A</b>	APP CRS <b>291°</b>	Rwy Idg TDZE <b>1164</b> Apt Elev <b>1171</b>	<b>5001</b>
--	------------------------	---	-------------

RNAV (GPS) RWY 29

IOWA COUNTY (MRJ)

RNP APCH - GPS.

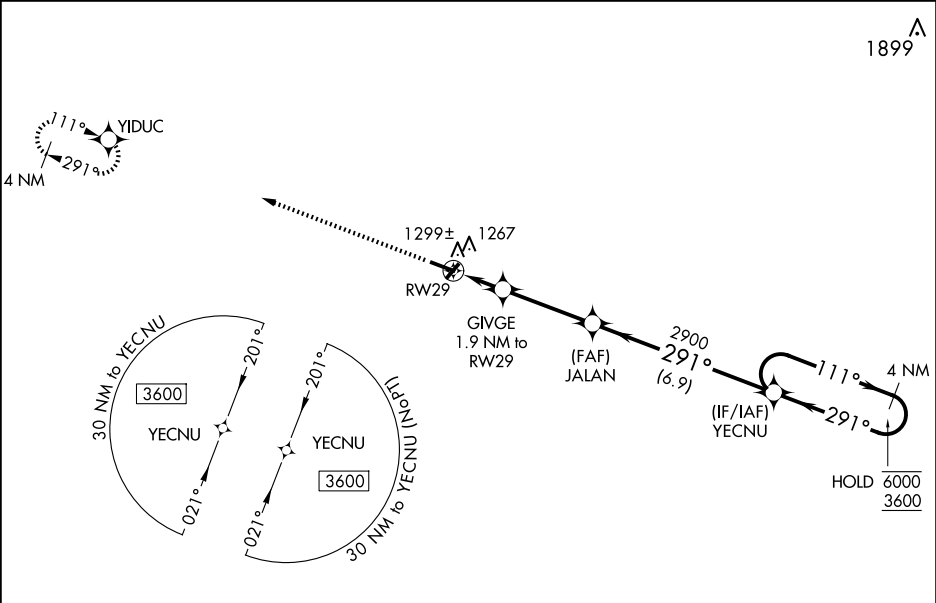
▼

▲

Baro-VNAV and VDP NA when using Platteville altimeter setting. For uncompensated Baro-VNAV systems, LNAV/VNAV NA below -17°C or above 54°C. When local altimeter setting not received, use Platteville altimeter setting and increase LPV DA to 1 469 feet; increase LNAV/VNAV DA to 1 524 feet; increase all MDAs 60 feet and LNAV visibility Cat C ¼ SM.

MISSED APPROACH:  
Climb to 3500 direct  
YIDUC and hold.

AWOS-3 <b>118.525</b>	CHICAGO CENTER <b>133.95 281.4</b>	UNICOM <b>122.8 (CTAF) 0</b>
--------------------------	---------------------------------------	---------------------------------



ELEV <b>1171</b>	TDZE <b>1164</b>
------------------	------------------

3500

YIDUC

VGSI and RNAV glidepath not coincident  
(VGSI Angle 3.00/TCH 44).

4 NM Holding Pattern

GIVE 1.9 NM to RW29

JALAN 2900

YECNU

1.2 NM to RW29

1800

2900

GP 3.00° TCH 40

1.2 0.7 3.4 NM 6.9 NM

CATEGORY	A	B	C	D
LPV DA	1 414-1	250 (300-1)		NA
LNAV/VNAV DA	1 469-1	305 (300-1)		NA
LNAV MDA	1 580-1	416 (500-1)	1 580-1 ¼ 416 (500-1 ¼)	NA
CIRCLING	1 620-1 449 (500-1)	1 640-1 469 (500-1)	1 640-1 ½ 469 (500-1 ½)	NA