

WAAS CH <b>57930</b> <b>W22A</b>	APP CRS <b>220°</b>	Rwy Idg <b>3600</b> TDZE <b>1171</b> Apt Elev <b>1171</b>
--	------------------------	---

RNAV (GPS) RWY 22

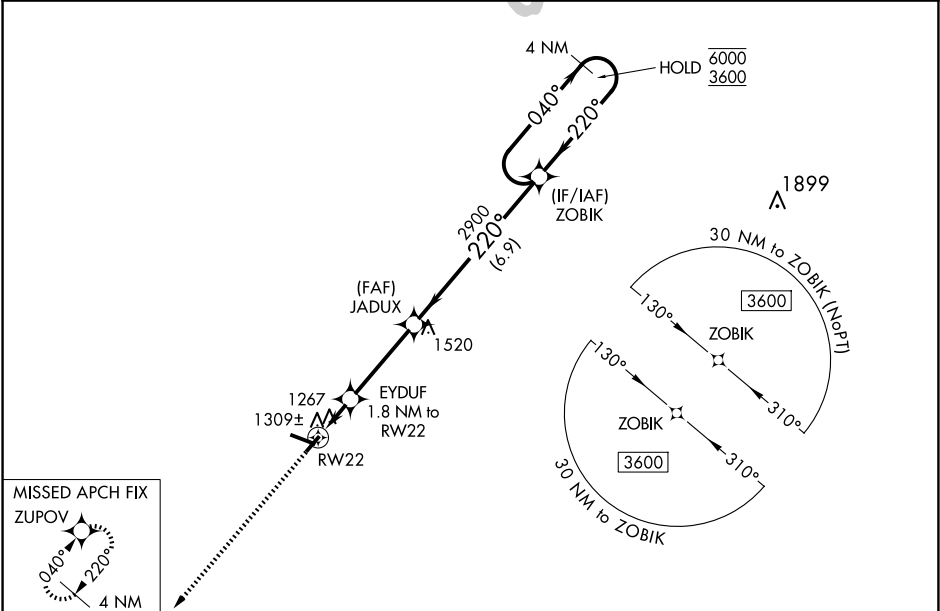
IOWA COUNTY (MRJ)

RNP APCH - GPS.

Baro-VNAV and VDP NA when using Platteville altimeter setting. For uncompensated Baro-VNAV systems, LNAV/VNAV NA below -17°C or above 54°C. Rwy 22 helicopter visibility reduction below ¾ SM NA. When local altimeter setting not received, use Platteville altimeter setting and increase LPV DA to 1476 feet, increase LNAV/VNAV DA to 1534 feet, increase all MDAs 60 feet, and LNAV visibility Cat C ¼ SM.

MISSED APPROACH:  
Climb to 3500 direct ZUPOV and hold.

AWOS-3 <b>118.525</b>	CHICAGO CENTER <b>133.95 281.4</b>	UNICOM <b>122.8 (CTAF) 0</b>
--------------------------	---------------------------------------	---------------------------------



ELEV 1171	TDZE 1171
-----------	-----------

3500

ZUPOV

VGSI and RNAV glidepath not coincident (VGSI Angle 3.00/TCH 30).

4 NM Holding Pattern

220°

EYDUF 1.8 NM to RW22

JADUX 2900

1.2 NM to RW22

1780

2900

040° 6000

220° 3600

GP 3.00° TCH 40

1.2

0.6

3.5 NM

6.9 NM

CATEGORY	A	B	C	D
LPV DA	1421-1	250 (300-1)		NA
LNAV/VNAV DA	1479-1	308 (400-1)		NA
LNAV MDA	1580-1	409 (500-1)	1580-1½ 409 (500-1½)	NA
CIRCLING	1620-1 449 (500-1)	1640-1 469 (500-1)	1640-1½ 469 (500-1½)	NA

MIRL Rwy 4-22 and 11-29 0