

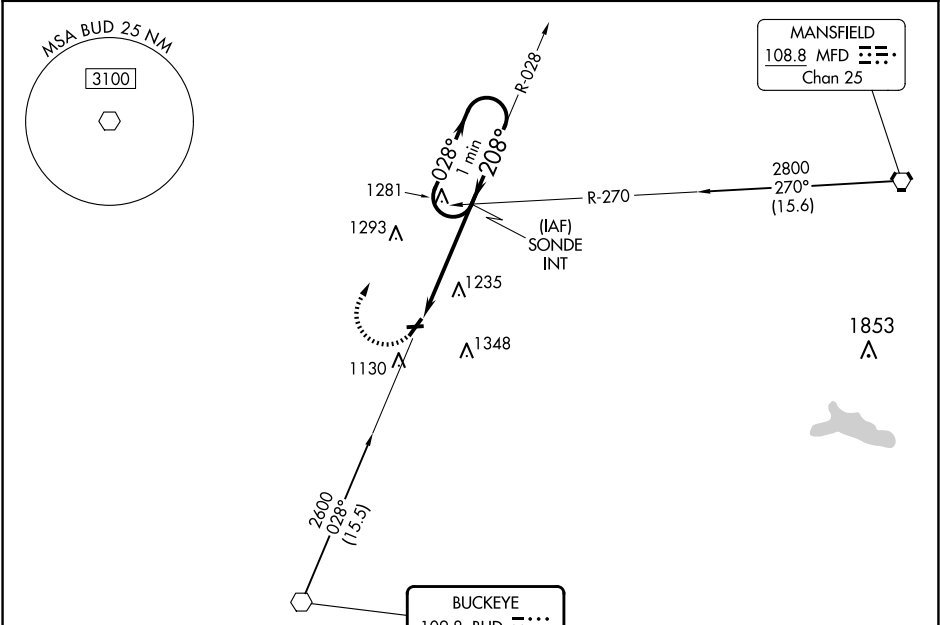
VOR BUD	APP CRS	Rwy Idg	3895
109.8	208°	TDZE	1003
		Apt Elev	1008

VOR RWY 22  
PORT BUCYRUS/CRAWFORD COUNTY (17G)

**V** Circling NA to Rwy 9 and 27. Rwy 22 helicopter visibility reduction below 1 SM NA. Straight-in and Circling Rwy 22 NA at night. When local altimeter setting not received, use Mansfield altimeter setting: increase all MDA 100 feet and visibility Cats B and C ½ SM.

**MISSED APPROACH:** Climbing right turn to 2600 on heading 090° and on BUD VOR R-028 to SONDE INT and hold.

AWOS-3 126.625	CLEVELAND APP CON ★ 128.35 360.65	UNICOM 122.8 (CTAF) 0
-------------------	--------------------------------------	--------------------------



ELEV 1008 TDZE 1003

208°

2902 X 90  
0.4% UP

3895 X 75

MIRL Rwy 4-22 0

REIL Rwy 4 and 22 0

FAF to MAP 4.5 NM

Knots	60	90	120	150	180
Min:Sec	4:30	3:00	2:15	1:48	1:30

**RADAR REQUIRED**

2600 BUD R-028 SONDE INT

VGSI and descent angles not coincident (VGSI Angle 3.00/TCH 26). One Minute Holding Pattern

SONDE INT

028° 2600

208°

3.25° TCH 40

4.5 NM

CATEGORY	A	B	C	D
S-22	1700-1	697 (700-1)	1700-2 697 (700-2)	NA
CIRCLING	1700-1	692 (700-1)	1700-2 692 (700-2)	NA

EC-2, 10 JUL 2025 to 07 AUG 2025

EC-2, 10 JUL 2025 to 07 AUG 2025