

WAAS CH 82033 W22A	APP CRS 223°	Rwy Idg TDZE Apt Elev	3895 1003 1008
--	------------------------	-----------------------------	---

RNAV (GPS) RWY 22

PORT BUCYRUS/CRAWFORD COUNTY (17G)

RNP APCH.

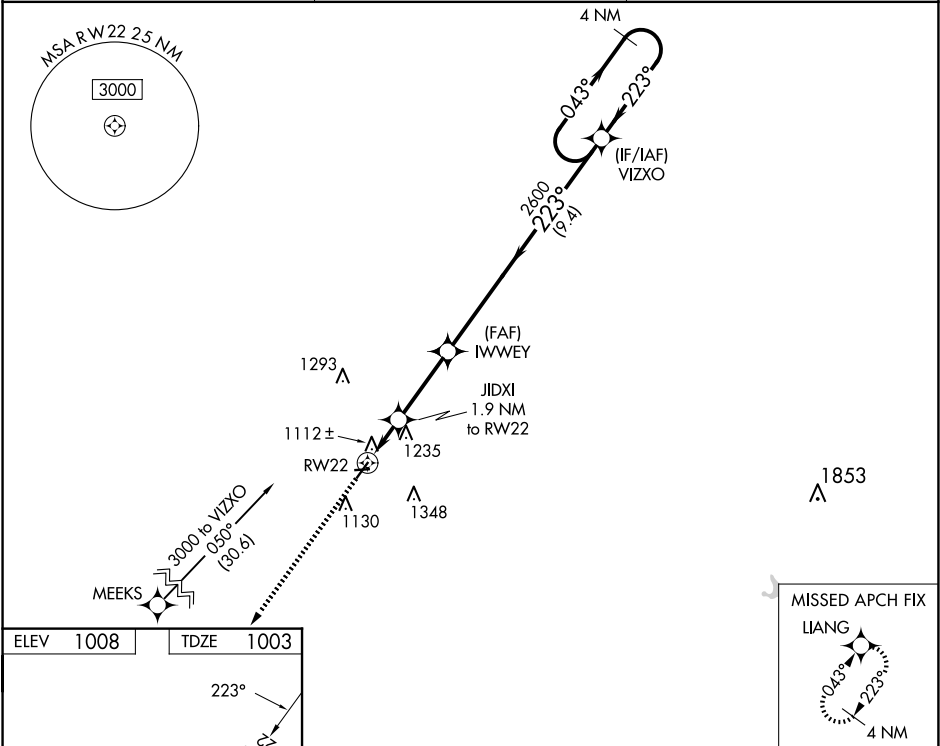
⚠

NA

Circling NA to Rwy 9 and 27. Rwy 22 helicopter visibility reduction below 1 SM NA. Straight-in and Circling Rwy 22 NA at night. When local altimeter setting not received, use Mansfield altimeter setting: increase all MDA 100 feet and visibility Cat C $\frac{3}{8}$ SM.

MISSED APPROACH: Climb to 3000 direct LIANG and hold.

AWOS-3 126.625	CLEVELAND APP CON ★ 128.35 360.65	UNICOM 122.8 (CTAF) 0
--------------------------	---	--



ELEV 1008 TDZE 1003

223°

2902 X 90
0.4% UP →

389° X 175

27

3000 LIANG

VGSI and descent angles not coincident (VGSI Angle 3.00/TCH 26).

JIDXI 1.9 NM to RW22

IWWWEY

VIZO

4 NM Holding Pattern

043° → 3000

← 223°

2600

1640

1.9 NM 3 NM 9.4 NM

CATEGORY	A	B	C	D
LP MDA	1380-1 377 (400-1)			NA
LNAV MDA	1500-1	497 (500-1)	1500-1 $\frac{3}{8}$ 497 (500-1 $\frac{3}{8}$)	NA
CIRCLING	1500-1 492 (500-1)	1540-1 532 (600-1)	1700-2 692 (700-2)	NA

REIL Rwy 4 and 22 **0**

MIRL Rwy 4-22 **0**

EC-2, 10 JUL 2025 to 07 AUG 2025

EC-2, 10 JUL 2025 to 07 AUG 2025