

WAAS CH <b>77814</b> <b>W04A</b>	APP CRS <b>037°</b>	Rwy Idg TDZE <b>468</b> Apt Elev <b>468</b>
--	------------------------	---

RNAV (GPS) RWY 4

BENTON COUNTY (ØM4)

RNP APCH.

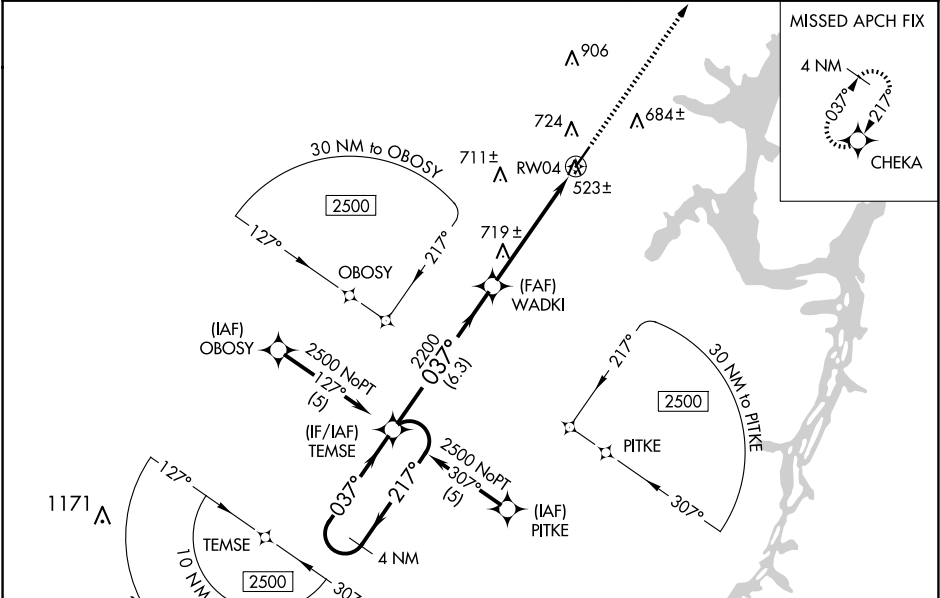
▼

▲ NA

Baro-VNAV NA. Use Beech River Rgnl altimeter setting; when not received use Jackson altimeter setting and increase all DA 58 feet and all MDA 60 feet and increase LPV all Cats visibility ¼ mile, LNAV/VNAV all Cats visibility ¼ mile, and LNAV Cat C visibility ¼ mile.

MISSED APPROACH: Climb to 2500 direct CHEKA and hold.

PVE AWOS-3 <b>118.125</b>	MEMPHIS CENTER <b>125.85 379.25</b>	UNICOM <b>122.8 (CTAF) Ø</b>
------------------------------	--	---------------------------------



ELEV 468

TDZE 468

4 NM Holding Pattern

VGSI and RNAV glidepath not coincident (VGSI 3.50/TCH 17).

2500

CHEKA

2500

← 217°

037° →

037°

WADKI

RW04

2200

6.3 NM

5.2 NM

CATEGORY	A	B	C	D
LPV DA	771-1	303 (400-1)		NA
LNAV/VNAV DA	944-1¾	476 (500-1¾)		NA
LNAV MDA	1040-1	572 (600-1)	1040-1½ 572 (600-1½)	NA

MIRL Rwy 4-22

REIL Rwys 4 and 22 Ø