

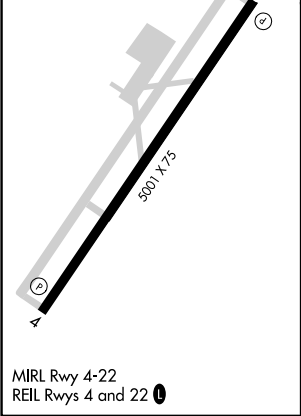
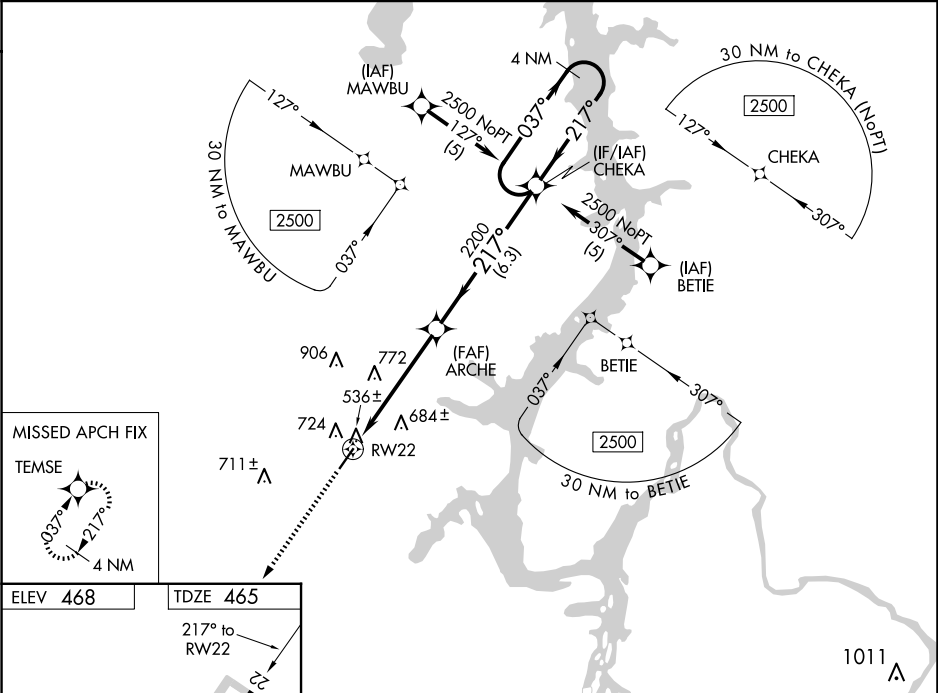
WAAS CH 82714 W22A	APP CRS 217°	Rwy Idg TDZE 465 Apt Elev 468	5001
--	------------------------	---	------

AL-6386 (FAA)

RNAV (GPS) RWY 22

BENTON COUNTY (ØM4)

RNP APCH. Baro-VNAV NA. Rwy 22 helicopter visibility reduction below 1 SM NA. Use Beech River Rgnl altimeter setting; when not received, use Jackson altimeter setting and increase all DA 58 feet and all MDA 60 feet and increase LPV all Cats visibility ¼ mile, LNAV/VNAV all Cats visibility ¼ mile, and LNAV Cat C visibility ¼ mile. Procedure NA at night.		MISSED APPROACH: Climb to 2500 direct TEMSE and hold.
PVE AWOS-3 118.125	MEMPHIS CENTER 125.85 379.25	UNICOM 122.8 (CTAF) Ø



ELEV 468 TDZE 465		217° to RW22	
2500	TEMSE	VGSI and RNAV glidepath not coincident (VGSI Angle 3.35/TCH 17).	
4 NM Holding Pattern		CHEKA	
ARCHE		217°	
RW22		2200	
5.3 NM		6.3 NM	
CATEGORY	A	B	C
LPV DA	833-1¼ 368 (400-1¼)		NA
LNAV/VNAV DA	980-1¾ 515 (600-1¾)		NA
LNAV MDA	1080-1 615 (700-1)		1080-1¾ 615 (700-1¾) NA

SE-1, 10 JUL 2025 to 07 AUG 2025

SE-1, 10 JUL 2025 to 07 AUG 2025